

ELIE SAAB

AT EMAAR BEACHFRONT

ELIE SAAB × EMAAR



Designer Residences

BEACHFRONT LIVING

Couturier Elie Saab and Dubai's premier property developer Emaar present an exclusive collection of luxury residences.

Situated at Dubai's most spectacular beachfront, the tower is the first ELIE SAAB designer building in the world.

Extraordinary Design

LIMITLESS POSSIBILITY

The residences are located in the exquisite Emaar Beachfront and imbued with ELIE SAAB innate elegance.

With its sweeping views of the Palm, sea and sky punctuated only by glimpses of the promenade and nearby parks, the tower is the pinnacle of modern luxury. Every element, from the building's architecture to lobby design, delivers a heightened residential experience.

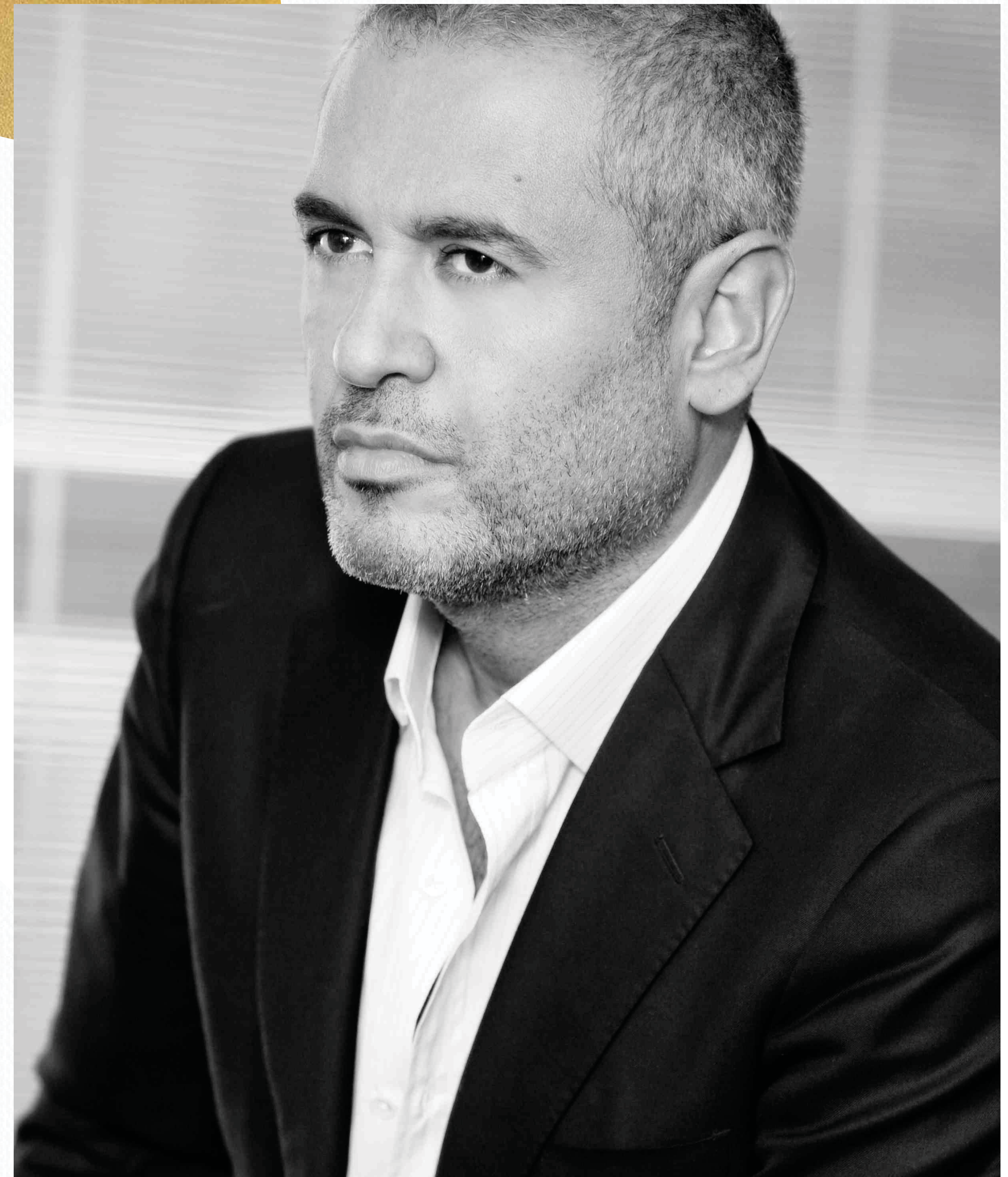


Elie Saab COUTURIER & RENOWNED DESIGNER

One of the world's leading names in Haute Couture and a red carpet favourite, Elie Saab takes inspiration from both Paris and Beirut, where his ateliers of craftsmen are based.

He first launched his eponymous label with his Haute Couture line in 1982 in Beirut at the age of 18 expanding soon after into ready-to-wear and accessories, with each collection displaying the innate elegance and femininity for which he is renowned.

Today, ELIE SAAB is a lifestyle brand, accompanying woman in every moment in her life, with a presence of flagships and points of sale spread globally and a wide range of product lines to cater to the many enthusiasts of ELIE SAAB aesthetics.







Building Features



INTERIORS BY
ELIE SAAB



PRIVATE
BEACH ACCESS



PALM ISLAND
VIEW



ACCESS
TO MULTIPLE
NEARBY PARKS



WATERFRONT
HOMES



PANORAMIC
VIEWS OF DUBAI
SKYLINE & SEA



ELIE SAAB
FURNITURE
COLLECTION
AVAILABLE FOR
PRIVATE PURCHASE

Emaar Beachfront

PRIVATE BEACH LIVING

Emaar Beachfront is the prestigious residential community located within the new maritime centre of the UAE, Dubai Harbour. The meticulously master-planned waterfront haven represents a unique blend of cosmopolitan living with a prime location and a luxury seaside lifestyle.



Exceptional Location

25
MINUTES TO
DOWNTOWN
DUBAI

25
MINUTES TO
DUBAI INT'L
AIRPORT

45
MINUTES TO
AL MAKTOUM
INT'L AIRPORT

5
MINUTES TO
DUBAI
MARINA

Seamless access
TO SHEIKH ZAYED ROAD



ELIE SAAB
AT EMAAR BEACHFRONT



"Elegance is a statement, an attitude."

Elie Saab



Architecture

A LANDMARK OF ELEGANCE & EXCELLENCE

A combination of ELIE SAAB's Haute Couture savoir-faire and Emaar's design prowess.

The architecture evokes Miami's Art Deco District, a slice of South Beach constructed in the 1930s and admired for its graphic lines, glittering accents, and a lifestyle of absolute indulgence.



LOBBY



LOBBY

Interiors

THE COUTURE LIFESTYLE

Elevated living at its best.

The penthouse offers a first-class luxurious sanctuary with uninterrupted views of the waterfront and Dubai's spectacular skyline. Elegantly designed by Elie Saab, the living experience is unmatched, evoking an impeccable sense of quality, splendour and sophistication.

Penthouses are located on 37th to 45th floor.



All furniture and accessories shown are for illustration purposes only, and will not be included in the actual apartments and penthouses.



All furniture and accessories shown are for illustration purposes only, and will not be included in the actual apartments and penthouses.

Unparalleled Privilege

4 BEDROOM PENTHOUSES

TOP
FLOOR
ACCESS

UNPARALLELED
WATERFRONT
VIEWS

EN-SUITE
MASTER BEDROOM
WITH ACCESS
TO BALCONY

INTERIOR
DESIGN
BY
ELIE SAAB

All furniture and accessories shown are for illustration purposes only,
and will not be included in the actual apartments and penthouses.





All furniture and accessories shown are for illustration purposes only, and will not be included in the actual apartments and penthouses.



All furniture and accessories shown are for illustration purposes only, and will not be included in the actual apartments and penthouses.



All furniture and accessories shown are for illustration purposes only, and will not be included in the actual apartments and penthouses.

Unabashed Luxury

LIVE IN GLAMOUR

An authentic sense of effortless and timeless elegance, inspired by ELIE SAAB aesthetics.

The beautiful collection of one to three-bedroom residences are designed with the highest specifications. Breathtaking views and flawlessly crafted designs are combined to create a luxurious oasis to retire to every day.

Residences are located on 2nd to 35th floor.





Residence Features

1, 2 & 3
BEDROOMS

INTERIORS INSPIRED BY
ELIE SAAB AESTHETICS

IMPECCABLY
FINISHED OPEN
KITCHENS

BREATHTAKING
WATERFRONT
VIEWS

MODERN BUILT-IN
WARDROBES
(TWO & THREE
BEDROOMS)

SPACIOUS LIVING
AND DINING AREAS
WITH ACCESS TO
BALCONY





Seamless Access



1.5KM OF PRISTINE BEACH



PANORAMIC VIEWS
OF THE ARABIAN SEA
& DUBAI MARINA



2
NEIGHBOURHOOD
PARKS



STEPS AWAY
FROM MARINA &
YACHT CLUB



NEARBY
LIGHTHOUSE
HOTEL



NEARBY LICENSED
RESTAURANTS



UPCOMING
MALL

Amenities



MULTI-PURPOSE ROOMS



FITNESS
FACILITIES



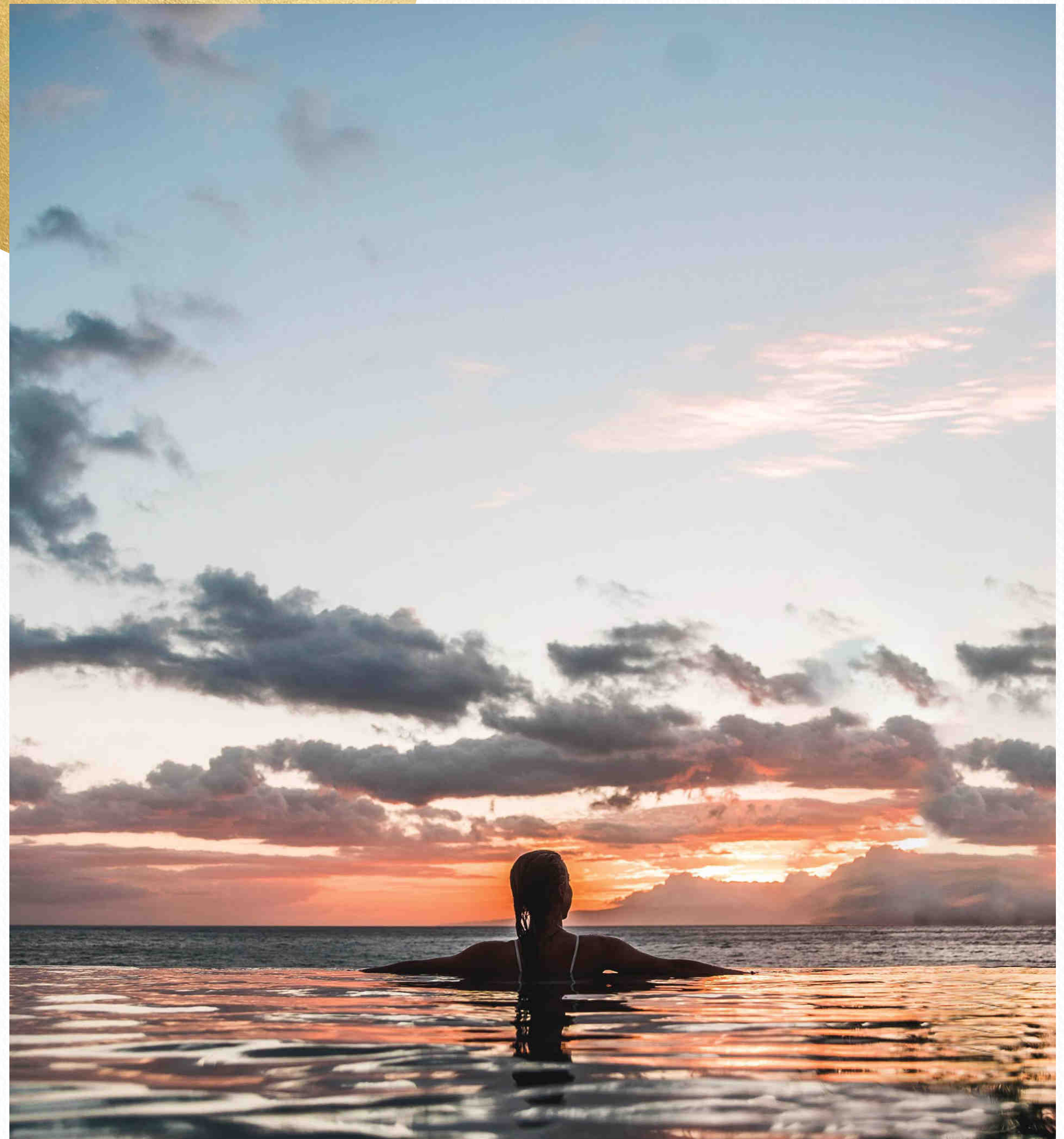
BARBECUE
AREA




LANDSCAPED
POOL
DECK



CHILDREN'S
PLAYGROUNDS
NEARBY





An aerial view of the Dubai skyline, featuring the Burj Khalifa as the tallest building. The city is densely packed with skyscrapers, and the surrounding landscape is visible in the distance. The sky is a clear, light blue, and a small airplane is visible in the upper center. The text is overlaid in a black, cursive font.

*Global. Glamorous. Ever-expanding.
It all happens in Dubai.*

Dubai

RISING

A city with everything. As one of the world's top destinations, there's no shortage of entertainment in Dubai.

A place where world-class shopping, modern marvels, natural beauty, and a rich tapestry of culture all exist as one.

COMING SOON MASTER PROJECTS

EXPO
2020

AL MAKTOUM
AIRPORT

DUBAI
CREEK
HARBOUR





Emaar

DUBAI'S MASTER DEVELOPER

The pioneer of luxury communities in Dubai, Emaar Properties is one of the globe's most admired real estate development companies. It specialises in properties, shopping malls, and entertainment, with an additional focus on hospitality and leisure. Emaar envisions and shapes premier lifestyles, all underlined with design excellence, build quality and timely delivery.



*Source: Brand Finance Report

Emaar

RE-SHAPING LIFESTYLES

BRAND VALUE

USD

2.7BN+

FY 2018

YOY BRAND

VALUE

↑ 39%

REVENUE

USD

6.99BN

FY 2018

YOY

REVENUE

↑ 37%

NET PROFIT

USD

1.96BN

FY 2018

YOY NET

PROFIT

↑ 30%

Emaar is known as the market leader in the global real estate market. Not only is it the largest real estate company outside of China but it is also one of the most valuable developers worldwide.

A photograph of the Dubai skyline at sunset, with the sun low on the horizon over the water. The sky is a warm orange, and several birds are silhouetted against it. The city's buildings are dark silhouettes against the bright sky. The water in the foreground is dark with a shimmering reflection of the sun.

"We see the transformation around us as promising opportunities to create a new Fmaar."

MOHAMED ALABBAR
CHAIRMAN OF EMAAR PROPERTIES

For more information on
GRAND BLEU TOWER
INTERIORS BY ELIE SAAB
at Emaar Beachfront,
call 800 36227 (UAE)
+971 4 366 1688 (international)
or talk to our
Property Advisor directly at
+971 4888 8844
from 9 AM to 7 PM (GSP),
Sunday to Thursday.

Visit our online sales centre at emaar.com
or any of our Sales Centres across the UAE.

DUBAI

Emaar Sales Centre | Downtown Dubai
Dubai Hills Estate Sales Pavilion | Umm Suqeim Road
Dubai Creek Harbour Sales Pavilion | Ras Al Khor
Emaar South Sales Centre | DWC Peripheral Road

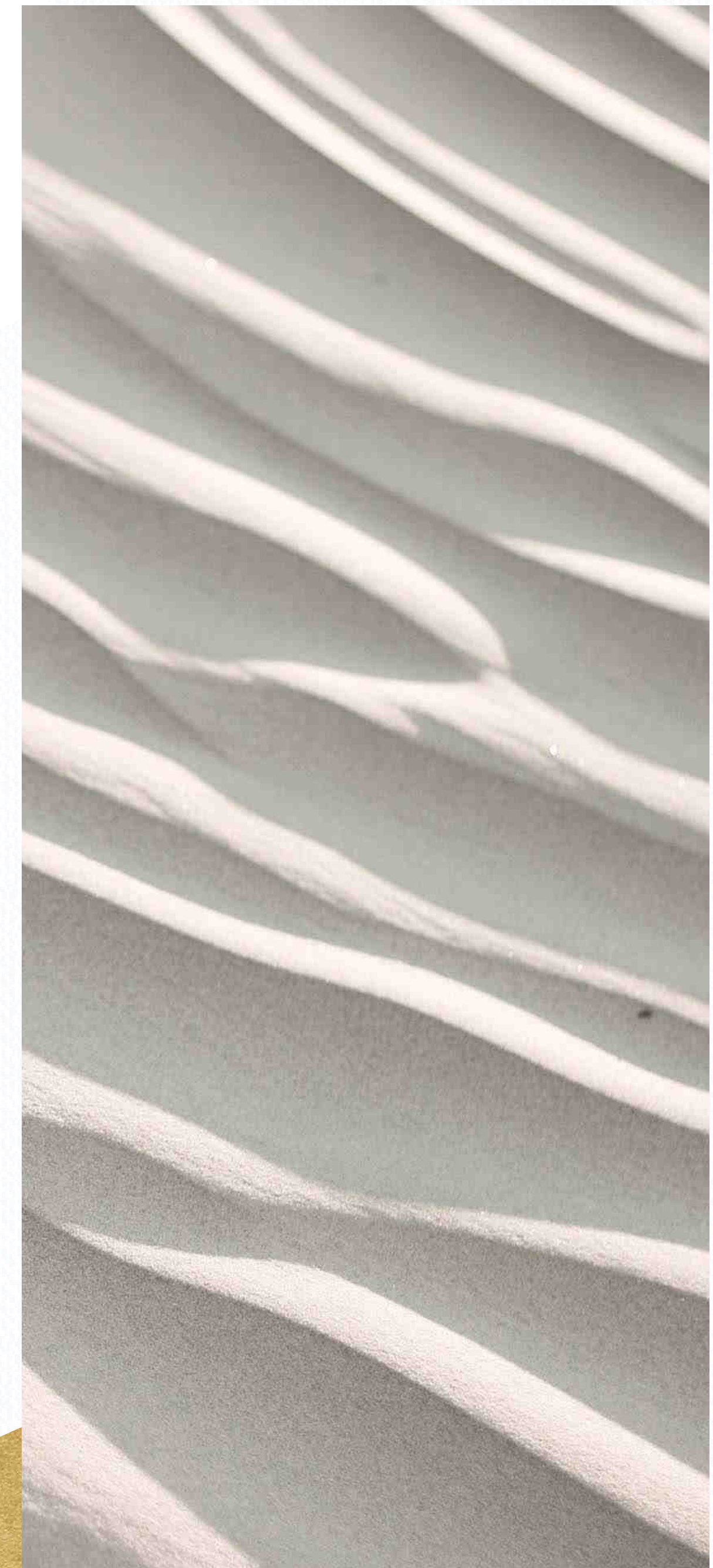
ABU DHABI

Emaar Sales Centre | Al Nahda Tower, Ground Floor,
4th Street, Corniche, Al Muroor Road

9:30 a.m. to 7 p.m. Saturday - Thursday

Friday from 2:00 p.m. to 7:00 p.m.

(all locations except the Abu Dhabi Sales Centre)



ELIE SAAB

AT EMAAR BEACHFRONT

GRAND BLEU TOWER
INTERIORS *by* **ELIE SAAB**

EMAAR