



KETURAH

R E S E R V E

WELCOME TO KETURAH RESERVE TRANSFORMATIONAL LIVING
THROUGH THE DESIGN OF SPACE

Mohammed Bin Rashid City District 7 (MBR7)
25.2048° N, 55.2708° E

KETURAH RESERVE

BIO LIVING
DESIGN PROCESS

WELCOME TO KETURAH RESERVE

A transformational living through the design of space

Mohammed Bin Rashid City District 7 (MBR7)
25.2048° N, 55.2708° E

KETURAH RESERVE

BIO LIVING
DESIGN PROCESS

THE MEANING OF KETURAH

KETURAH is an Arabic word for the fragrance traditionally diffused throughout the home to welcome guests.

PORTFOLIO

KETURAH RESERVE

BIO LIVING
DESIGN PROCESS

THE BRIEF

keturah Reserve

Meydan

Dubai

Keturah Reserve at Meydan

DESIGN CONCEPT

Naturally Sustainable

The FLOW, Air, Light, Colour, Space

4 Bedroom Rowhouse Superhome

4 Bedroom Back-to-Back Superhome

5 Bedroom Rowhouse Superhome

DESIGN AND TECHNICAL DEVELOPMENT

MEYDAN HOME-OWNER

KETURAH RESERVE'S SERVICES AND AMENITIES

PAYMENT PLAN

CONTACT

Mohammed Bin Rashid City District 7 (MBR7)
25.2048° N, 55.2708° E

KETURAH RESERVE

BIO LIVING
DESIGN PROCESS

THE MESSAGE

“Keturah Reserve is uniquely conceived and designed.

Each detail has been crafted with care to elevate and enrich the lives of every generation of our residents.

Our vision is for Keturah Reserve residents to be the happiest, best fulfilled people in Dubai.”

Talal M. Al Gaddah
Founder and CEO

Mohammed Bin Rashid City District 7 (MBR7)
25.2048° N, 55.2708° E

KETURAH RESERVE

BIO LIVING
DESIGN PROCESS



Mohammed Bin Rashid City District 7 (MBR7)
25.2048° N, 55.2708° E

KETURAH RESERVE
BIO LIVING
DESIGN PROCESS

KETURAH
GYM
GROCERY
APARTMENT
LOBBY ENTRANCE
MEDITATION
BUSINESS AREA
SPA
YOGA

THE BRIEF

Dubai is the capital of innovation, one of the most dynamic and exciting cities in the world.

Equally, Keturah Reserve at Meydan is the most innovative and exciting New Luxury development in Dubai, with a brand-new concept, transformational living through the design of space.





KETURAH RESERVE, NEW LUXURY

New Luxury is raw and silent. It elevates and empowers, evoking the profound emotional well-being of mind and body through the design of interior, exterior and personal space. It connects residents with the surrounding nature through Bio Living.



BIO LIVING AT KETURAH RESERVE

Bio Living is inspired by Biophilic Design, the concept of creating architecture and interiors to enable residents to connect with the surrounding nature. All five human senses are engaged by nature, improving physical and mental well-being and adding real value to residents' lives. Bio Living respects all life forms, flora, fauna and human.



Mohammed Bin Rashid City District 7 (MBR7)
25.2048° N, 55.2708° E



KETURAH RESERVE

BIO LIVING
DESIGN PROCESS



DESIGNED FROM THE INSIDE OUT

We spend 90% of our lives indoors.
It is where we reconnect with our emotions and our inner self.

Keturah Reserve SuperHomes are uniquely conceived and designed from the inside out using contemporary architectural principles of the five elements, proportions, ratio and daylight, in raw and natural materials to create harmony in space.

WHY DUBAI?

Dubai is the City of the Future, one of the most exciting, inspirational and successful cities in the world, the global headquarters of crypto currency in DMCC.

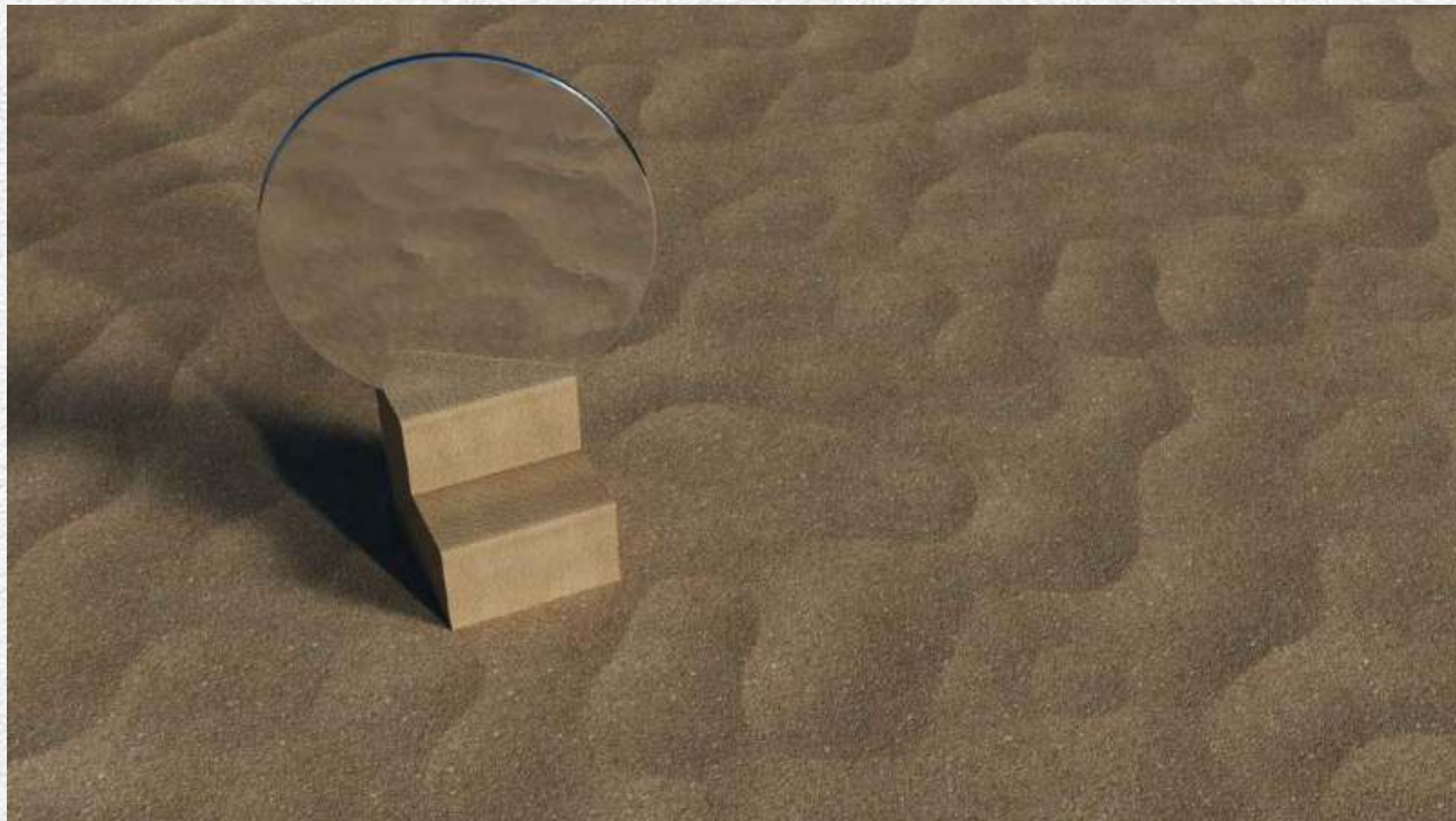
Its thriving expat community of over 200 nationalities comprises 80% of the population. Dubai is a pioneer for future urban living with sustainable development an integral part of its Green 2040 Vision.

THE MEYDAN STORY

Meydan is an Arabic word for an open, urban space for public discussion that traces its origin to the Ottoman Empire.

Keturah Reserve at Meydan is one of Dubai's most exclusive addresses. Meydan is a new sustainable and environmentally friendly development owned by His Highness Sheikh Mohammed bin Rashid Al Maktoum.

It encloses the world-renowned Meydan Racecourse and Grandstand, home of the Dubai World Cup horse racing event.



KETURAH RESERVE AT MEYDAN

Keturah Reserve is uniquely located at Meydan, the only residential development in Dubai with a direct 7-minute link to Downtown, with four separate exits onto the city's main thoroughfares.

1. KETURAH RESERVE BY MAG
2. MAG LOGISTICS
3. MAG 318
4. BURJ KHALIFA
5. DUBAI WATER CANAL
6. MEYDAN ONE MALL
7. MEYDAN GRANDSTAND
8. MEYDAN GOLF COURSE
9. EMIRATES FINANCIAL TOWERS BY MAG
10. DUBAI DESIGN DISTRICT
11. DUBAI SANCTUARY
12. AL AIN / DUBAI HIGHWAY
13. AL KHAIL HIGHWAY
14. AL MEYDAN ROAD
15. SHEIKH ZAYED ROAD
16. ETIHAD RAIL MAIN STATION



ACCESSIBILITY

- Dubai International Airport, 21 minutes
- Downtown, 7 minutes
- DIFC Financial Center, 12 minutes
- Business Bay, 15 minutes
- Dubai Design District, 15 minutes
- The Beach, 20 minutes
- Blue Waters, 30 minutes

ART AND CULTURE

- Museum of The Future, 20 minutes
- Dubai Public Library, 25 minutes
- OliOli® - Experiential Play Museum for Kids, 20 minutes
- Butterfly Garden, 30 minutes
- Alserkal Avenue, 20 minutes

MALLS

- Dubai Mall, 20 minutes
- Dubai Hills Mall, 15 minutes
- Meydan One Mall, 15 minutes

EDUCATION

- Gems-Willington-Private School, 17 minutes
- The English College, 15 minutes
- Dubai International Private School, 17 minutes
- Hartland International School Dubai, 16 minutes
- Swiss International Scientific School, 15 minutes

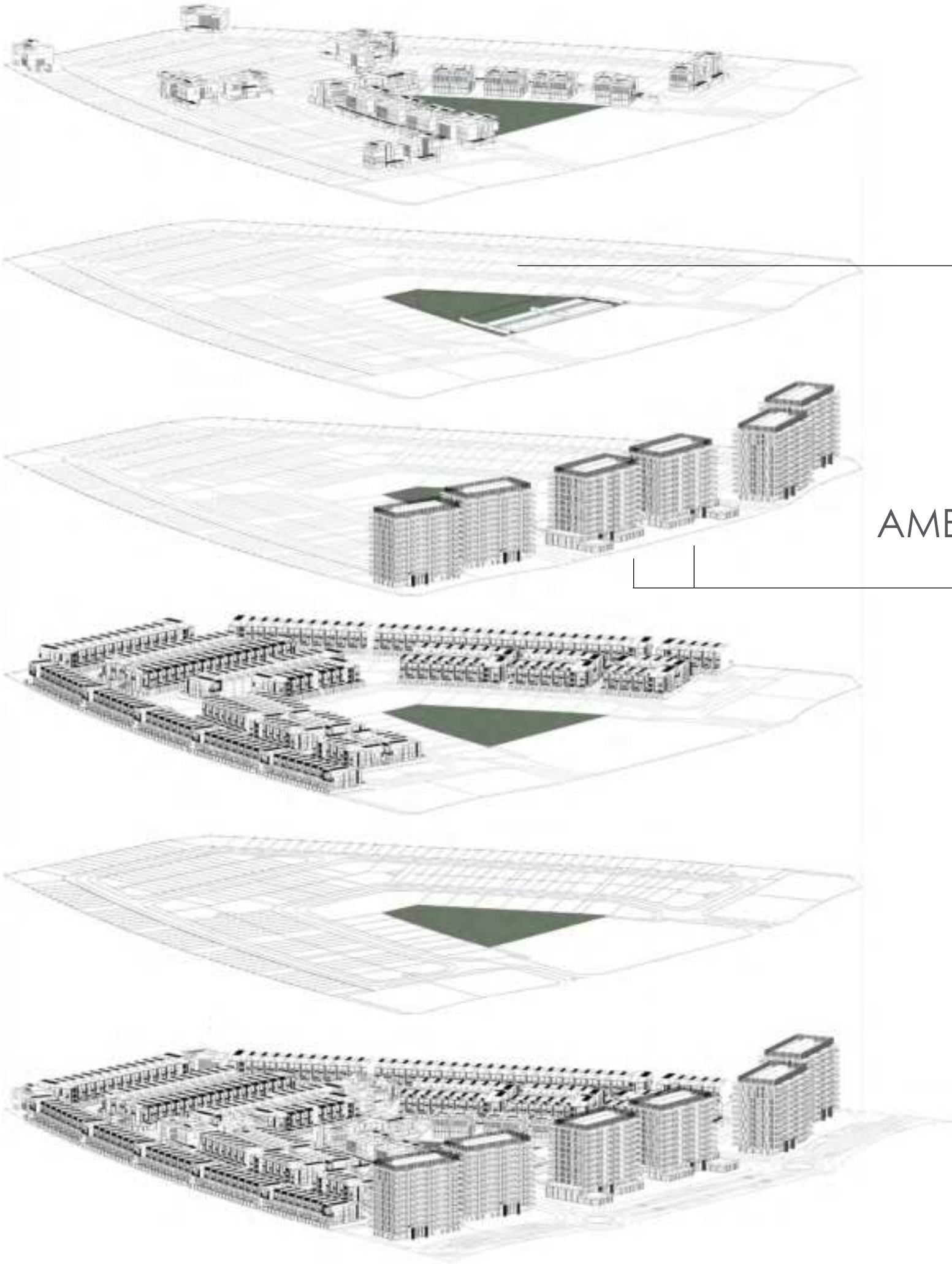
HEALTHCARE

- Medcare Hospital, 15 minutes
- Emirates Hosp. Clinics, 17 minutes
- Mediclinic City Hospital, 19 minutes
- American Hospital Dubai, 19 minutes
- King's College Hospital, 9 minutes

GOLF CLUBS

- Meydan Golf, 10 minutes
- Dubai Hills Golf Club, 15 minutes
- Emirates Golf Club, 24 minutes





AMENITIES

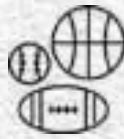
KETURAH
RESERVE

DESIGNED FOR EVERY GENERATION

Every resident, women, men and children of all ages will find their perfect niche in Keturah Reserve.

DESIGNED FOR ALL LIFE SPECIES

Keturah Reserve is landscaped with indigenous trees and plants that need little water to thrive in the local climate, attracting birds, animals and insects.



SPORTS

- GYM
- Cross Fit
- Tennis
- Football
- Swimming
- Basketball
- Handball
- Squash
- Martial Arts
- Padel Tennis
- Studios
- Gymnastics
- Shooting
- Fencing



SUPPLEMENTARY SERVICES

- 18+ Roof Pool
- Family & Kids Pool
- Ladies Pool
- Sauna & SPA
- Family Lounges
- Cinema
- Nursery
- Clinic
- Kids Park
- Green Areas
- Jogging Tracks
- Co-Working Stations
- Gaming & VR Areas



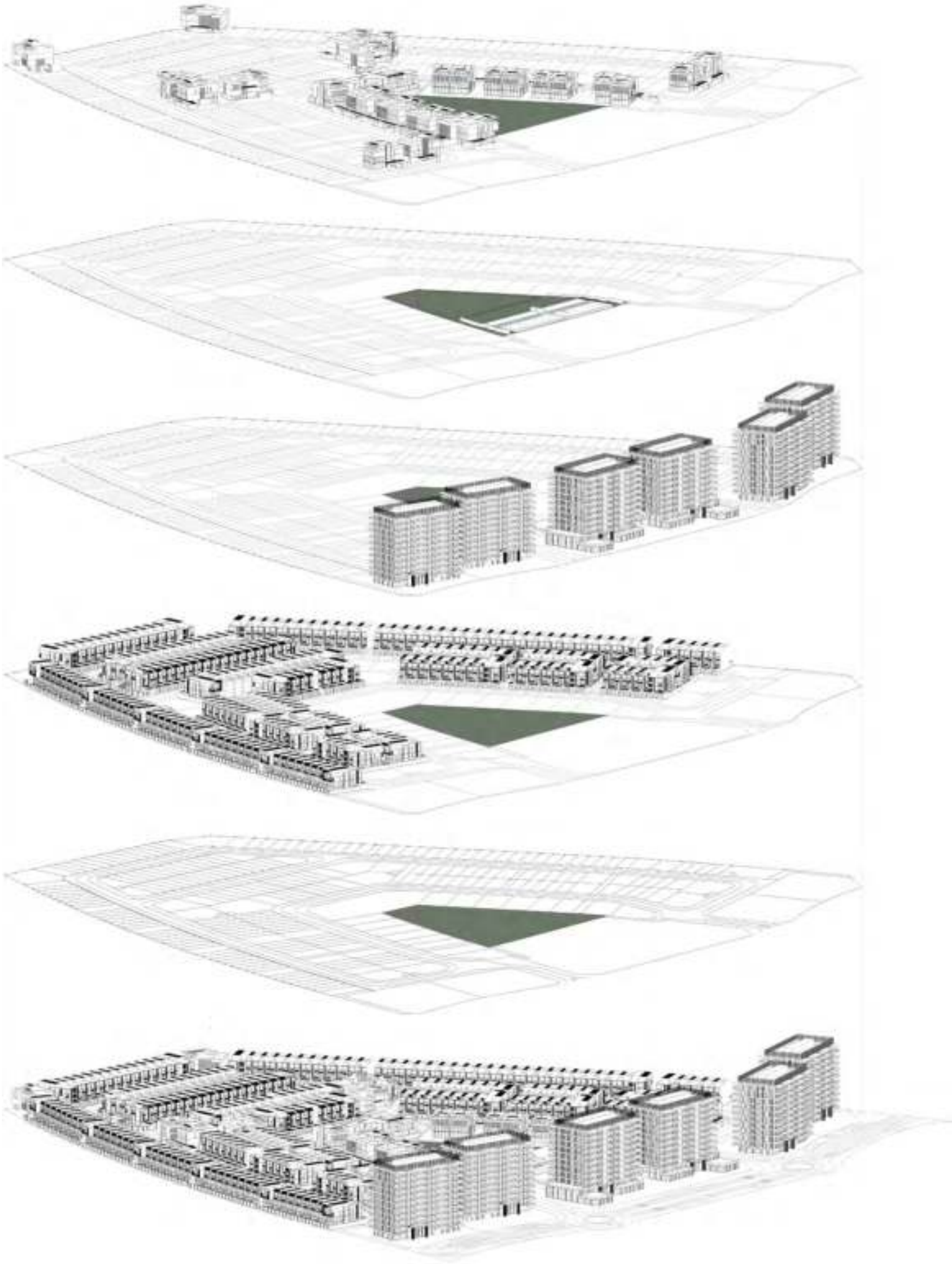
FOOD & BEVRAGE

- Restaurants
- Kiosks
- Juice Bars



CULTURAL

- Art School for kids & adults



KETURAH RESERVE

SUPERHOMES

4-Bedroom Superhome

3-storey with lift, double car park, outdoor pool, terrace with seating area and roof deck

Prototype		Nos.
Row House	Regular	73 Units
Row House	Corner	10 Units
Back-To-Back	Regular	27 Units
Back-To-Back	Corner	4 Units

5-Bedroom Superhome

3-storey with lift, double car park, outdoor pool, terrace with seating area and roof deck

Prototype	Nos.
Row House	10 Units

VILLAS

Prototype	Nos.
Plots designated for signature villas	69

APARTMENTS

Prototype		Nos.
1-Bedroom Unit	Regular	144 Units
1-Bedroom Unit	Corner	36 Units
2-Bedroom Unit	Regular	172 Units
2-Bedroom Unit	Corner	100 Units
3-Bedroom Unit	Regular	16 Units
4-Bedroom Unit	Regular	8 Units

My Space, My Mind.





KETURAH
GYM
GROCERY
APARTMENT
LOBBY ENTRANCE
MEDITATION
BUSINESS AREA
BUSINESS AREA
SPA
YOGA







MEDITATION SPACE

Throughout Keturah Reserve,
inside is linked to outside through nature, visible at every vista.



INVIGORATE SPACE

Pilates at the Invigorate Space.

All activities at Keturah Reserve develop the inner core, strengthening the body from the inside out.

Mohammed Bin Rashid City District 7 (MBR7)
25.2048° N, 55.2708° E

KETURAH RESERVE

BIO LIVING
DESIGN PROCESS

WELL-BEING

- Water Bike Pool
- Indoor Invigorate Space gym with oxygen tunnel entryway
- Outdoor Invigorate Space gym



WELL-BEING

- Indoor Zen Space for mediation
- Yoga
- Silk Rope Classes
- Sound Healing
- Mother and Baby classes
- Dance Studio

Mohammed Bin Rashid City District 7 (MBR7)
25.2048° N, 55.2708° E



COMMUNAL SPECIAL EVENTS SPACE

Special events with seating
and fully equipped kitchen.

Mohammed Bin Rashid City District 7 (MBR7)
25.2048° N, 55.2708° E

KETURAH RESERVE

BIO LIVING
DESIGN PROCESS

My Space, My Mind

Mohammed Bin Rashid City District 7 (MBR7)
25.2048° N, 55.2708° E

KETURAH RESERVE

BIO LIVING
DESIGN PROCESS

BUSINESS CENTRE

Individual chill pods for sound therapy, research or remote working.



Mohammed Bin Rashid City District 7 (MBR7)
25.2048° N, 55.2708° E

KETURAP RESERVE

BIOLOGY
DESIGN ROOM

BUSINESS CENTRE

The naturally lit 24-hour Business Centre is equipped with ergonomic seating and a circular reference library.

Mohammed Bin Rashid City District 7 (MBR7)
25.2048° N, 55.2708° E

KETURAH RESERVE

BIO LIVING
DESIGN PROCESS

My Space, My Mind.

- Spa, Hair and Beauty Salon for Women
- Spa and Hair Salon for Men



Mohammed Bin Rashid City District 7 (MBR7)
25.2048° N, 55.2708° E

KETURAH RESERVE

BIO LIVING
DESIGN PROCESS

My Space, My Mind.

Keturah Reserve understands the care and value that goes into choosing a home that can grow and fit with all the needs of generations to come.

Mohammed Bin Rashid City District 7 (MBR7)
25.2048° N, 55.2708° E

KETURAH RESERVE

BIO LIVING
DESIGN PROCESS

KID'S PLAY SPACE

The Kids' Play Space with textile playground sculptures by the award-winning artist, Toshiko MacAdam.



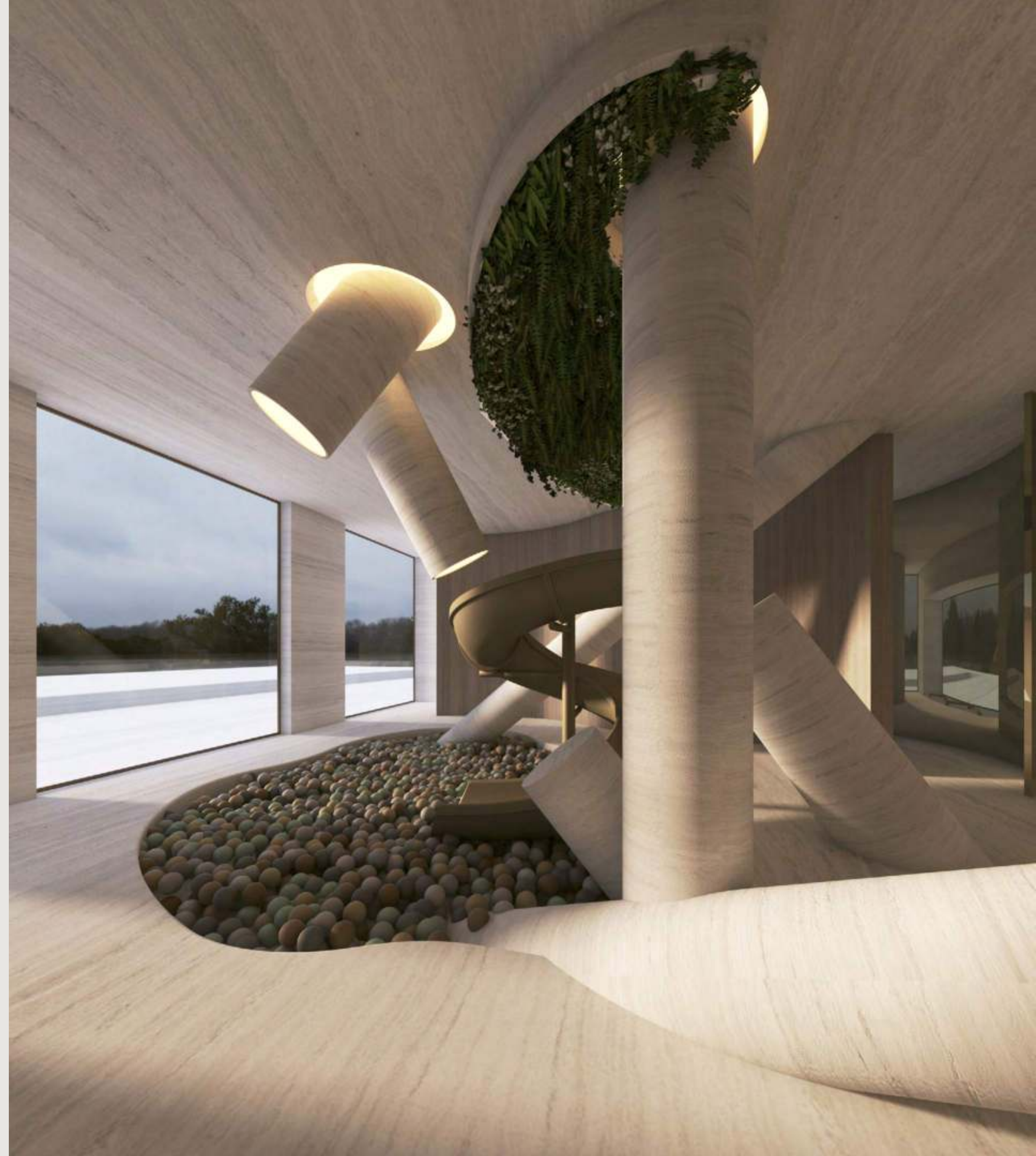
KID’S PLAY SPACE

- Shaded organic kids’ pool and play area
- Playground for babies and toddlers
- Playground for 7- to 14-year-olds
- Kids Bio Living Farm



Mohammed Bin Rashid City District 7 (MBR7)
25.2048° N, 55.2708° E

Keturah Reserve integrates technology for accelerated
learning of the younger generations.



ELEVATION OF THE SUPERHOME

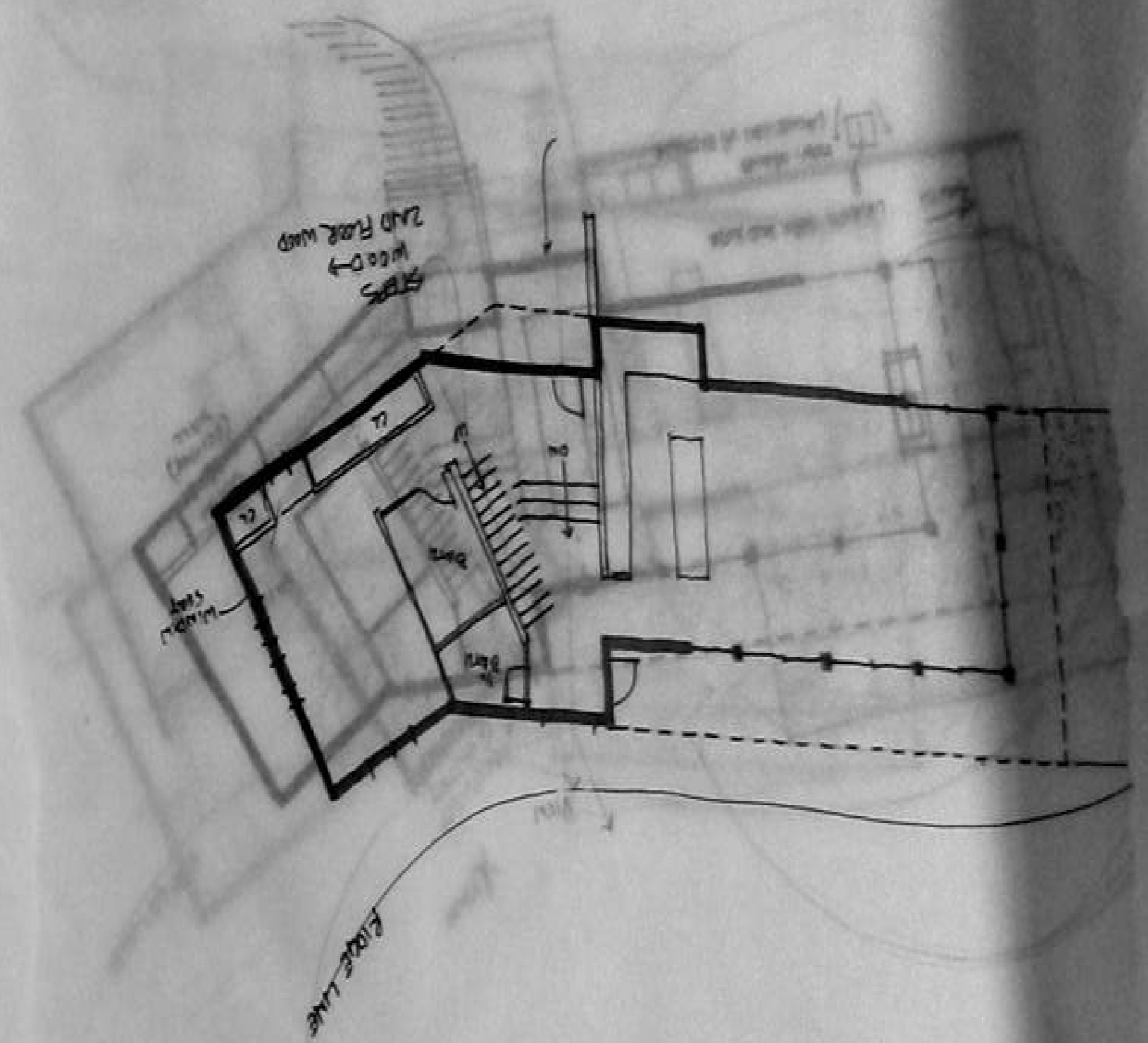
Each three-storey superhome is composed of two distinct parts,
the communal space in front, the private space behind.
A passerelle connects the two.

The roof deck has an outdoor pool, terrace, barbeque with seating
and storage area.

9

12

19



Mohammed Bin Rashid City District 7 (MBR7)
25.2048° N, 55.2708° E



FAÇADE DESIGN

KETURAH RESERVE

BIO LIVING
DESIGN PROCESS



Mohammed Bin Rashid City District
25.2048° N, 55.2708° E



KETURAH RESERVE

BIO LIVING
DESIGN PROCESS



Mohammed Bin Rashid City District 7 (MBR7)
25.2048° N, 55.2708° E



FAÇADE DESIGN

KETURAH RESERVE

BIO LIVING
DESIGN PROCESS



Mohammed Bin Rashid City District 7 (MBR7)
25.2048° N, 55.2708° E



FAÇADE DESIGN

KETURAH RESERVE

BIO LIVING
DESIGN PROCESS



The rooftop with outdoor seating offers a view over the clear, blue Meydan sky, a place to breathe. The double volume, ceiling height and wall thickness are designed to cool the interior spaces naturally, minimizing the need for air conditioning.

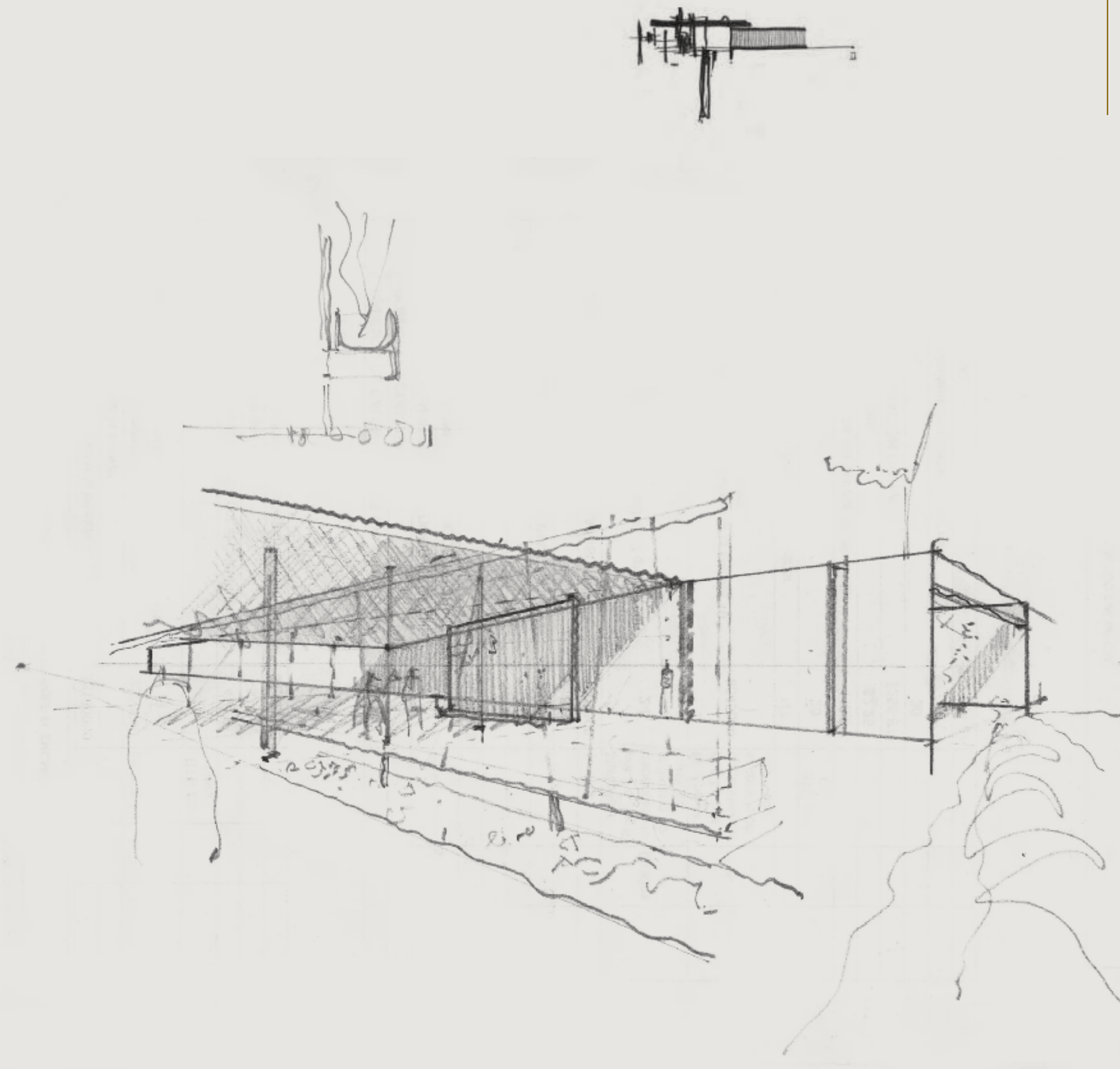
ROOF GARDEN





NATURAL SUSTAINABILITY AT KETURAH RESERVE

- Keturah Reserve is designed to be naturally self-sustaining from conception.
- All amenity areas are accessible by foot on tree shaded pathways, eliminating the need of driving from place to place.
- Floorplans are created based on established material measurements to avoid material and energy waste. Materials are specifically selected for their adaptability to the microclimate of Meydan.
- Raw wood is fired a minimum six times to increase durability and resistance to wear and tear.
- High ceilings, wall thickness and windowpane density cool the interior naturally, saving energy by reducing the need for air conditioning.
- Balconies are broader than the norm to reduce the heat and glare of direct sunlight.
- Door frames and garages are wider to facilitate the flow of passage.
- New Luxury integrates sustainability naturally without the need of further human involvement.

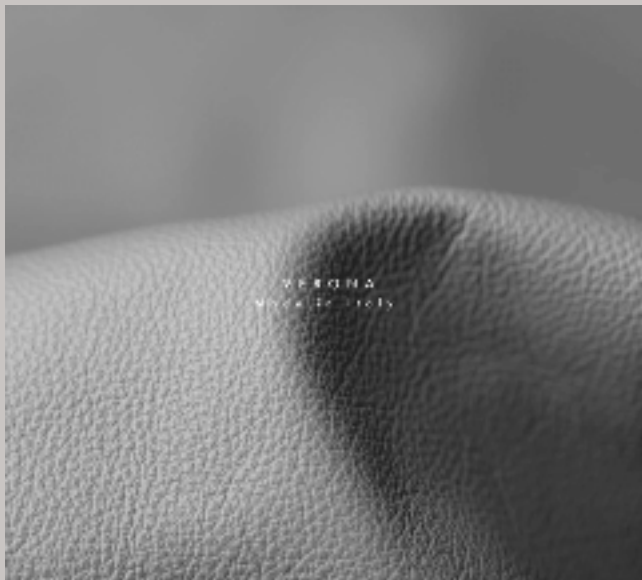


KETURAH RESERVE SUPERHOMES, DESIGNED FROM THE INSIDE OUT

Keturah Reserve is uniquely conceived and designed from the inside out using principles of the five elements, proportions, ratio and light, and natural materials. All residences are fully furnished, with furniture and fixtures custom-designed and produced for each space in natural, raw materials and in neutral colours. They blend perfectly into the interior, freeing the residents' movement and circulation, and elevating their physical and mental well-being.

Keturah Reserve's Super Home™ Concept is designed to transform residents' lives through their experience of the interior and exterior space.

THE FLOW OF AIR, LIGHT, COLOUR , SPACE, TEXTURE AND MATERIAL



THE FLOW OF AIR

Keturah Reserve homes are designed with double volume interior spaces, naturally increasing the flow of air. Keturah Reserve's super-efficient VRF (Variable Refrigerant Flow) technology reduces energy costs, improves residents' comfort, and sends cooled air to evaporators in different spaces, maintaining an even, consistent temperature by zone. The air filtration system silently eliminates pollen, cooking odors and smoke, continuously purifying and refreshing the air.



THE FLOW OF LIGHT

The architecture of Keturah Reserve is designed to optimize natural daylight without its heat or glare. When daylight fades, architectural lighting optimizes the body's circadian system, enhancing residents' mood, comfort and alertness, and improving the quality of their sleep.

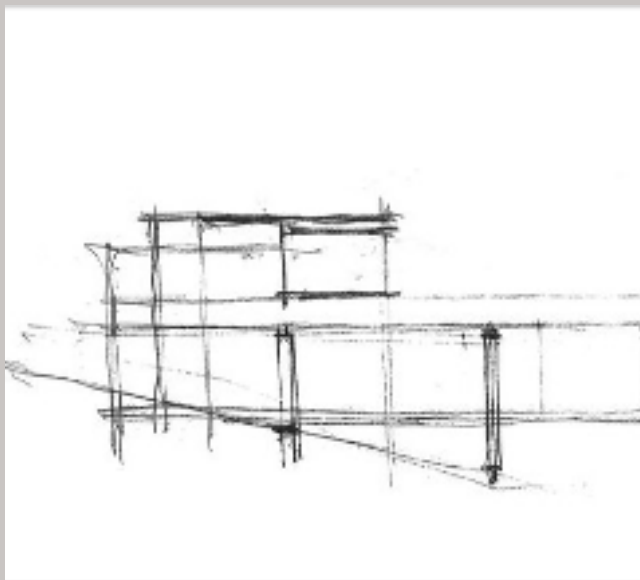
Lighting is always lateral, never directly overhead, to optimize visual comfort, enhance the space and create atmosphere by zone, for a subtle and healing ambiance



THE FLOW OF COLOUR

The architecture of Keturah Reserve homes blends into the rawness of the desert landscape, to create an ambiance of solace and serenity. The bleached bone-coloured travertine facade links the exterior to the interior, with bronze vertical slats creating a subtle interplay of light and shade.

The three cool-neutral tone-on-tone palette of cream, champagne and bronze, and three textures of wood, stone and metal, are inspired by the natural colours and textures of the surrounding desert.



THE FLOW OF SPACE

Keturah Reserve homes are conceived and designed from the inside out using contemporary architectural principles of the five elements, proportions, ratio and daylight, in raw, natural materials.

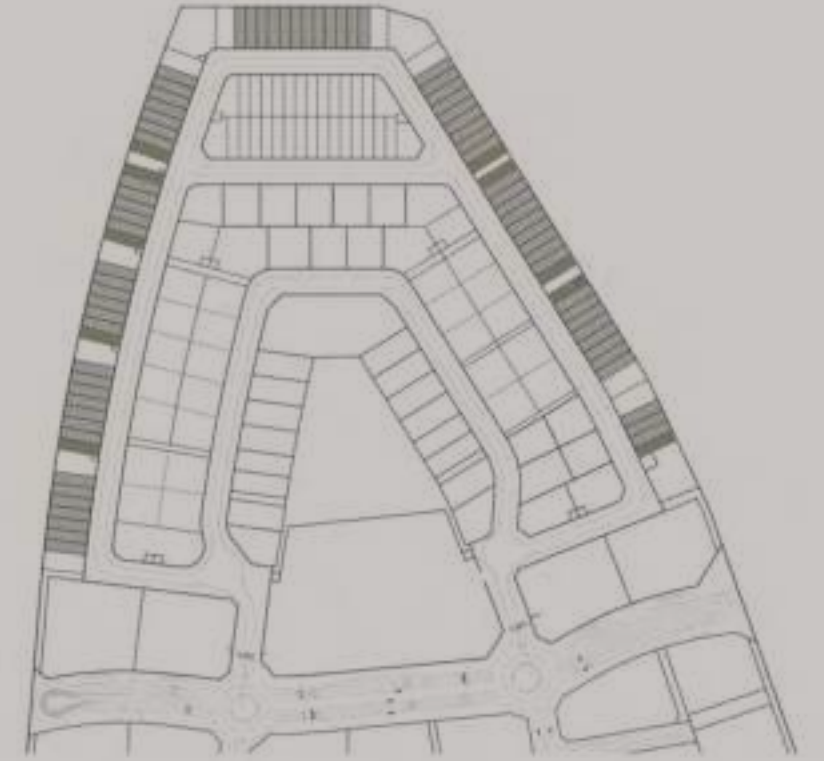
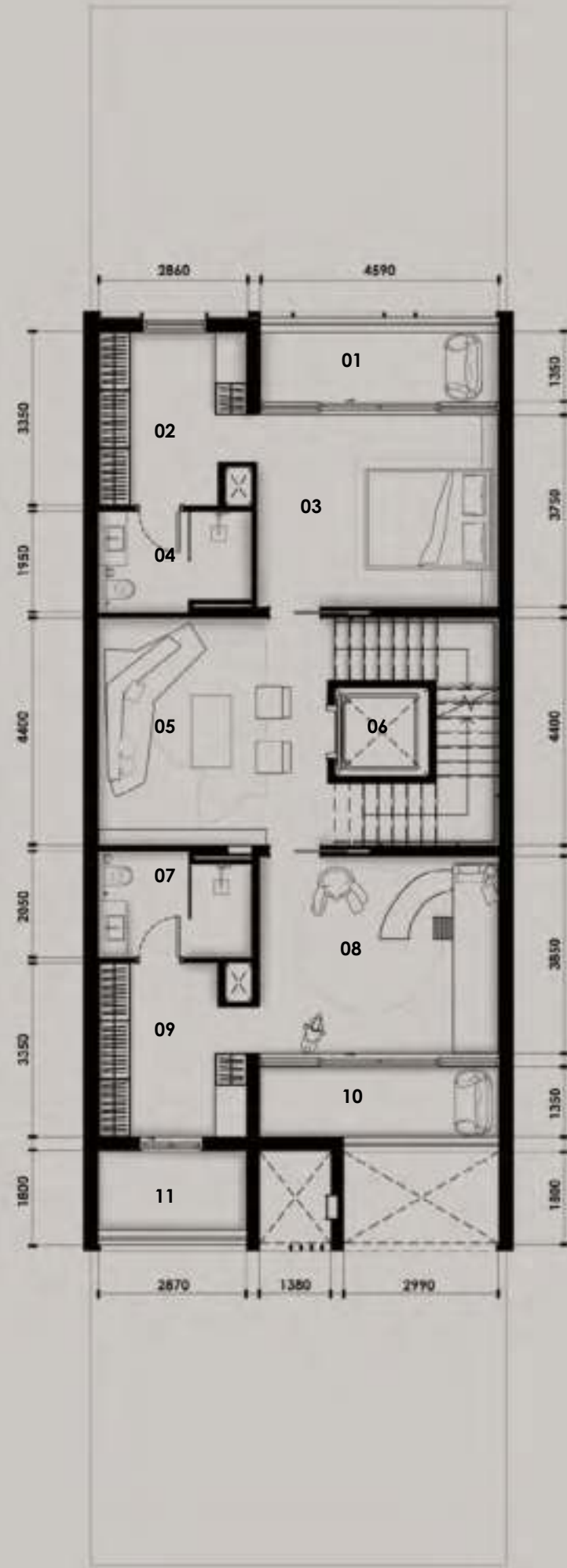
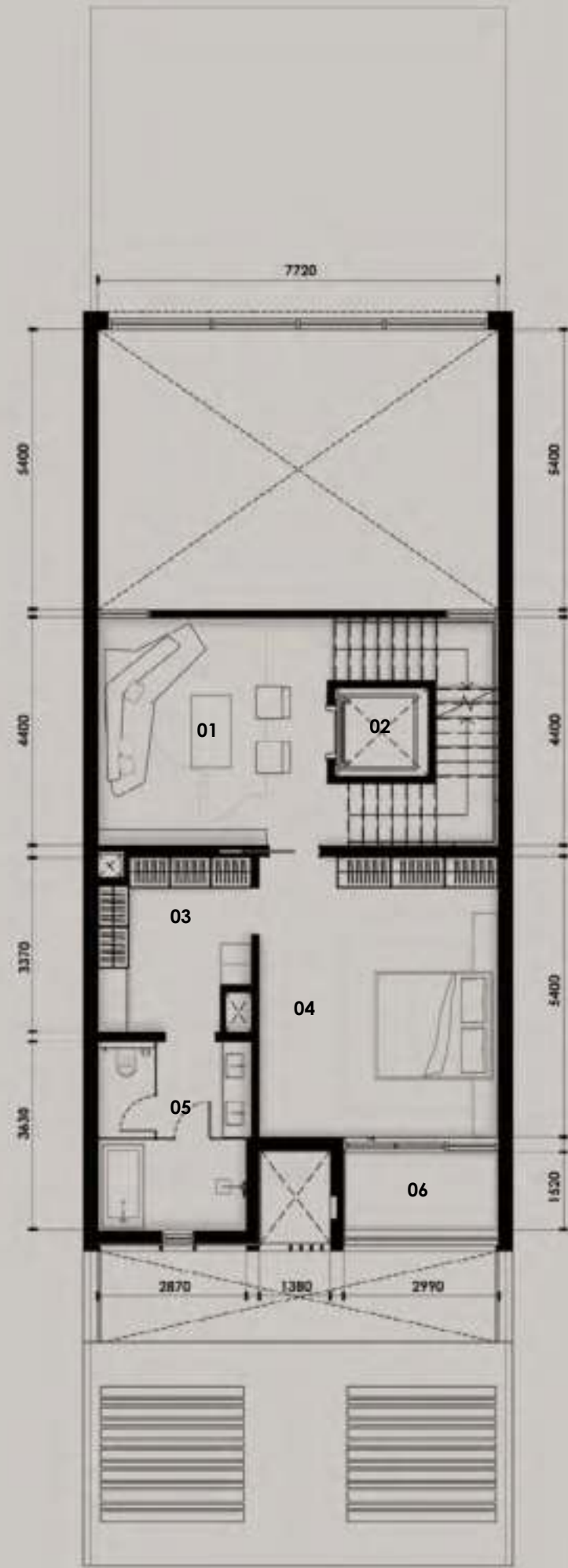
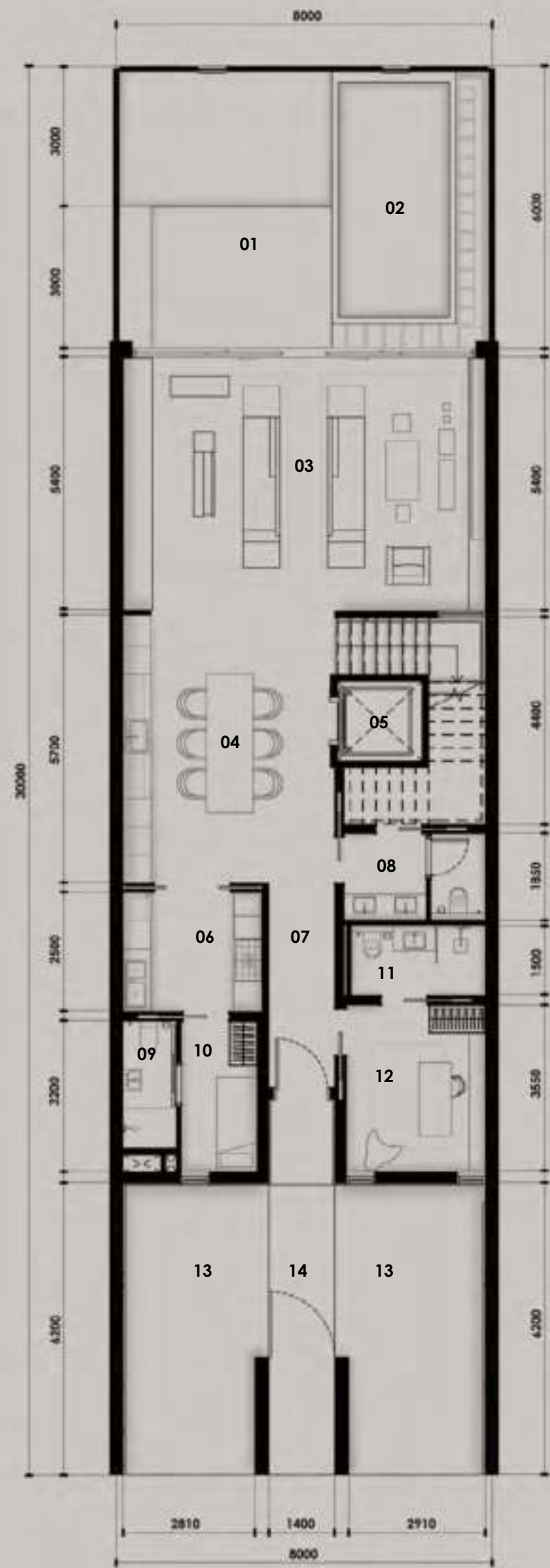
The double volume open plan spaces optimize the flow of passage, without corridors or hallways. Furniture and fixtures are custom-designed for each residence and produced for each space.

They blend perfectly into the interior, freeing the flow of residents' movement, and elevating their physical and mental well-being.

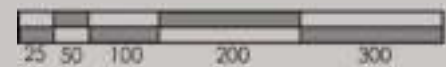


THE FLOW OF TEXTURE AND MATERIAL

The project's design began with the selection of textures, glass, travertine, wood and metal. Raw materials are selected to correspond with the flow of energy. Perfect individually, they interplay and exchange energies when placed together.



SUPERHOME		
Plant Room Level	22.40 sq.m	241.11 sq.ft
Ground Floor	178.20 sq.m	1,918.13 sq.ft
First Floor	96.10 sq.m	1,034.41 sq.ft
Second Floor	130.40 sq.m	1,403.61 sq.ft
Roof deck	80.40 sq.m	865.42 sq.ft
Total	507.50 sq.m	5,462.68 sq.ft
PLOT		
AREA	240.00 sq.m	2,583.34 sq.ft
Plot No.	42, 43, 44 and 45	
No. of Units	73 REGULAR	10 CORNER
No. of Levels	GROUND + 2 FLOORS + ROOF	
Height	14.60m ROOF SLAB	



- 01 OUTDOOR YARD

02 POOL

03 ENTERTAINMENT AREA

04 KITCHEN | DINING AREA

05 LIFT

06 MAIN KITCHEN

07 HALLWAY
- 08 WASH AREA

09 MAID'S BATHROOM

10 MAID'S ROOM

11 GUEST BATHROOM

12 GUEST ROOM

13 CAR PORT

14 MAIN ENTRANCE

- 01 MASTER LIVING AREA

02 LIFT

03 WALK-IN-CLOSET

04 MASTER BEDROOM

05 MASTER BATHROOM

06 BALCONY

- 01 BALCONY

02 WALK-IN-CLOSET

03 BEDROOM

04 BATHROOM

05 ENTERTAINMENT AREA

06 LIFT
- 07 BATHROOM

08 BEDROOM | KID'S ROOM

09 WALK-IN-CLOSET

10 BALCONY

11 BALCONY

- 01 OUTDOOR SEATING AREA

02 OUTDOOR GRILL AREA

03 LAUNDRY AREA

04 LIFT

05 MEP SERVICES AREA

KETURAH RESERVE

ROW HOUSE | 4 BEDROOM



Mohammed Bin Rashid City District 7 (MBR7)
25.2048° N, 55.2708° E



KETURAH RESERVE

BIO LIVING
DESIGN PROCESS



Mohammed Bin Rashid City District 7 (MBR7)
25.2048° N, 55.2708° E

KETURAH RESERVE
BIO LIVING
DESIGN PROCESS



Mohammed Bin Rashid City District 7 (MBR7)
25.2048° N, 55.2708° E



KETURAH RESERVE

BIO LIVING
DESIGN PROCESS



Mohammed Bin Rashid City District 7 (MBR7)
25.2048° N, 55.2708° E



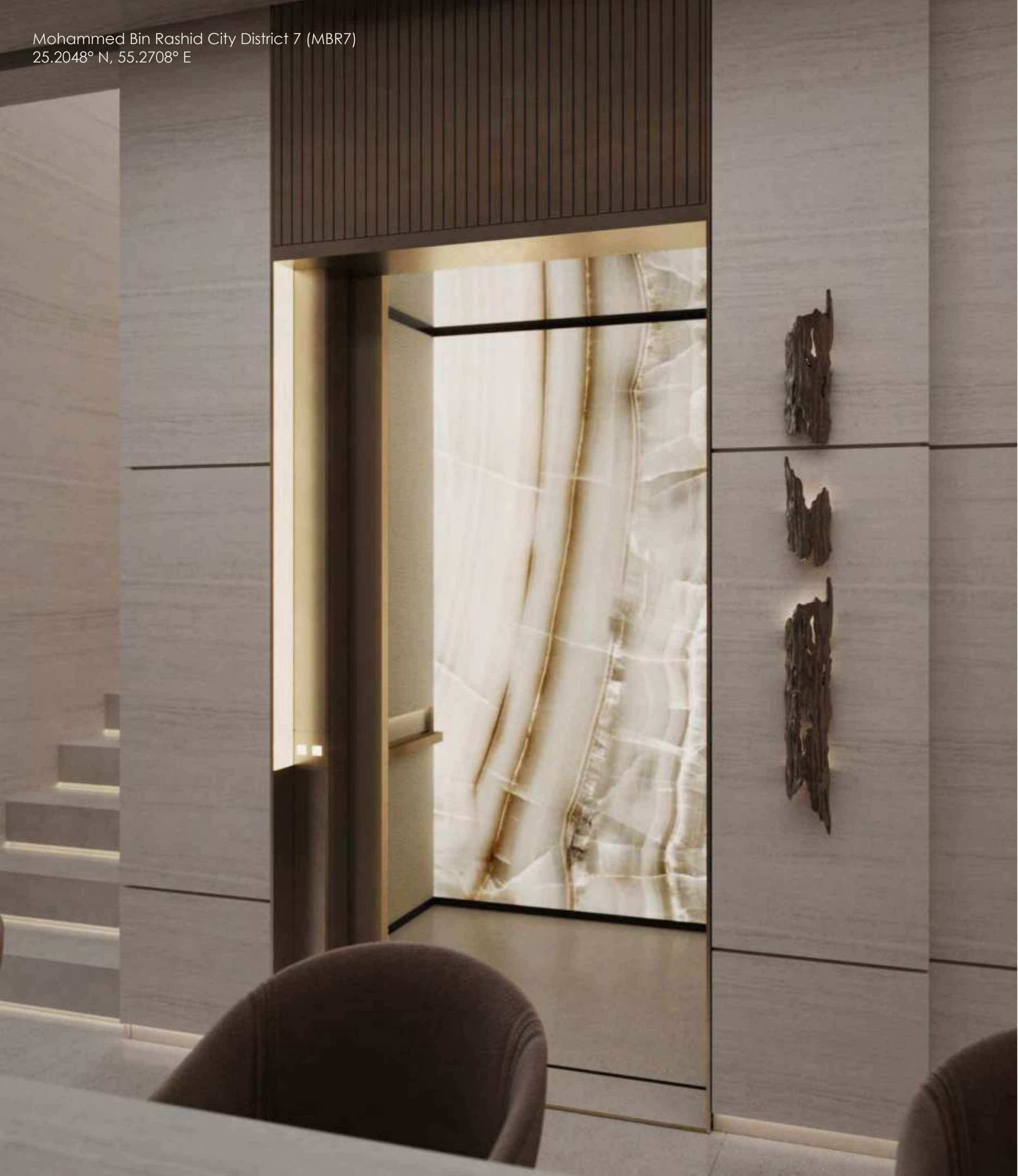
KETURAH RESERVE

BIO LIVING
DESIGN PROCESS



All Keturah Reserve homes include two kitchens, a functional and an entertainment kitchen.

Mohammed Bin Rashid City District 7 (MBR7)
25.2048° N, 55.2708° E



KETURAH RESERVE

BIO LIVING
DESIGN PROCESS





Mohammed Bin Rashid City District 7 (MBR7)
25.2048° N, 55.2708° E

KETURAH RESERVE

BIO LIVING
DESIGN PROCESS



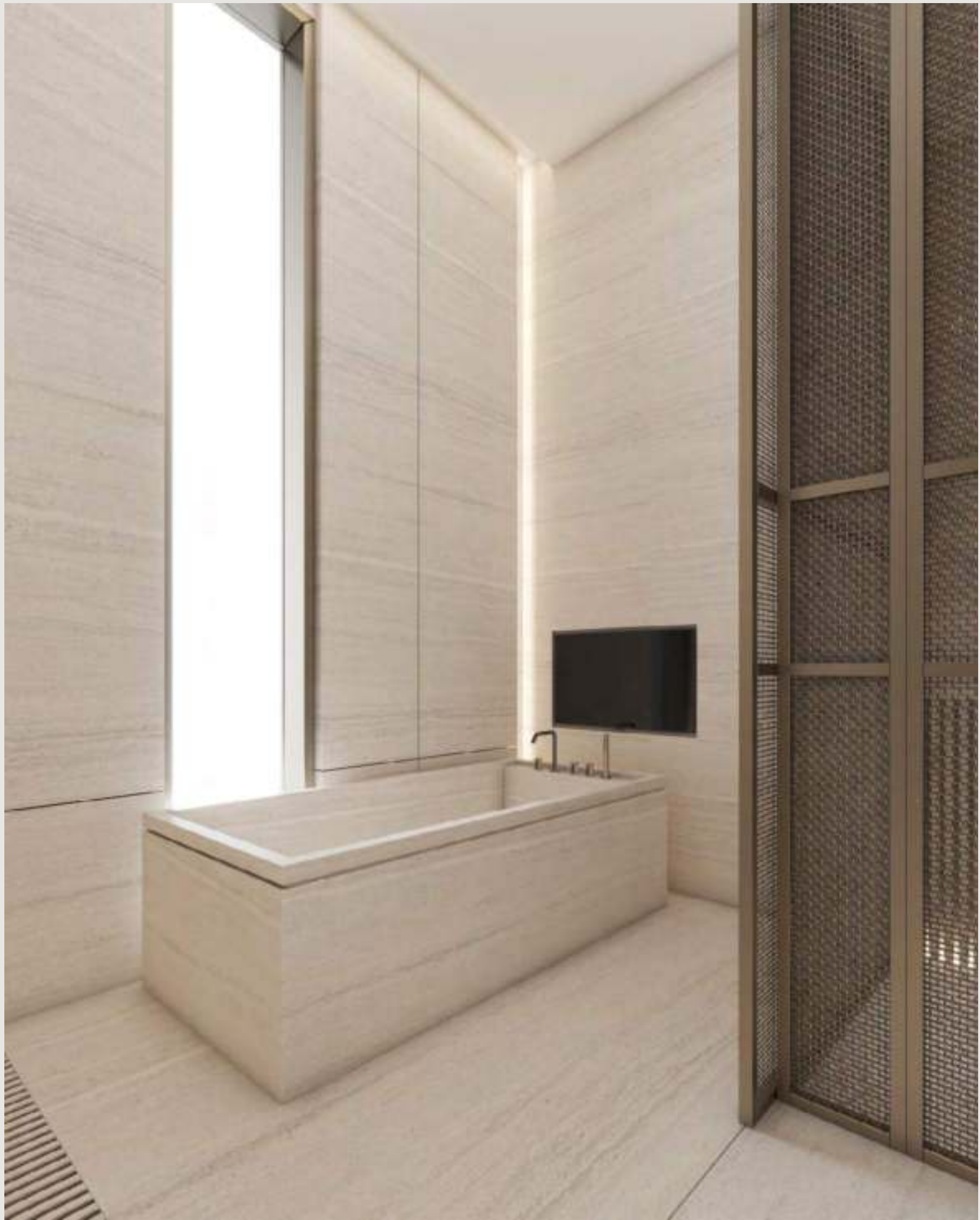


Mohammed Bin Rashid City District 7 (MBR7)
25.2048° N, 55.2708° E



KETURAH RESERVE

BIO LIVING
DESIGN PROCESS

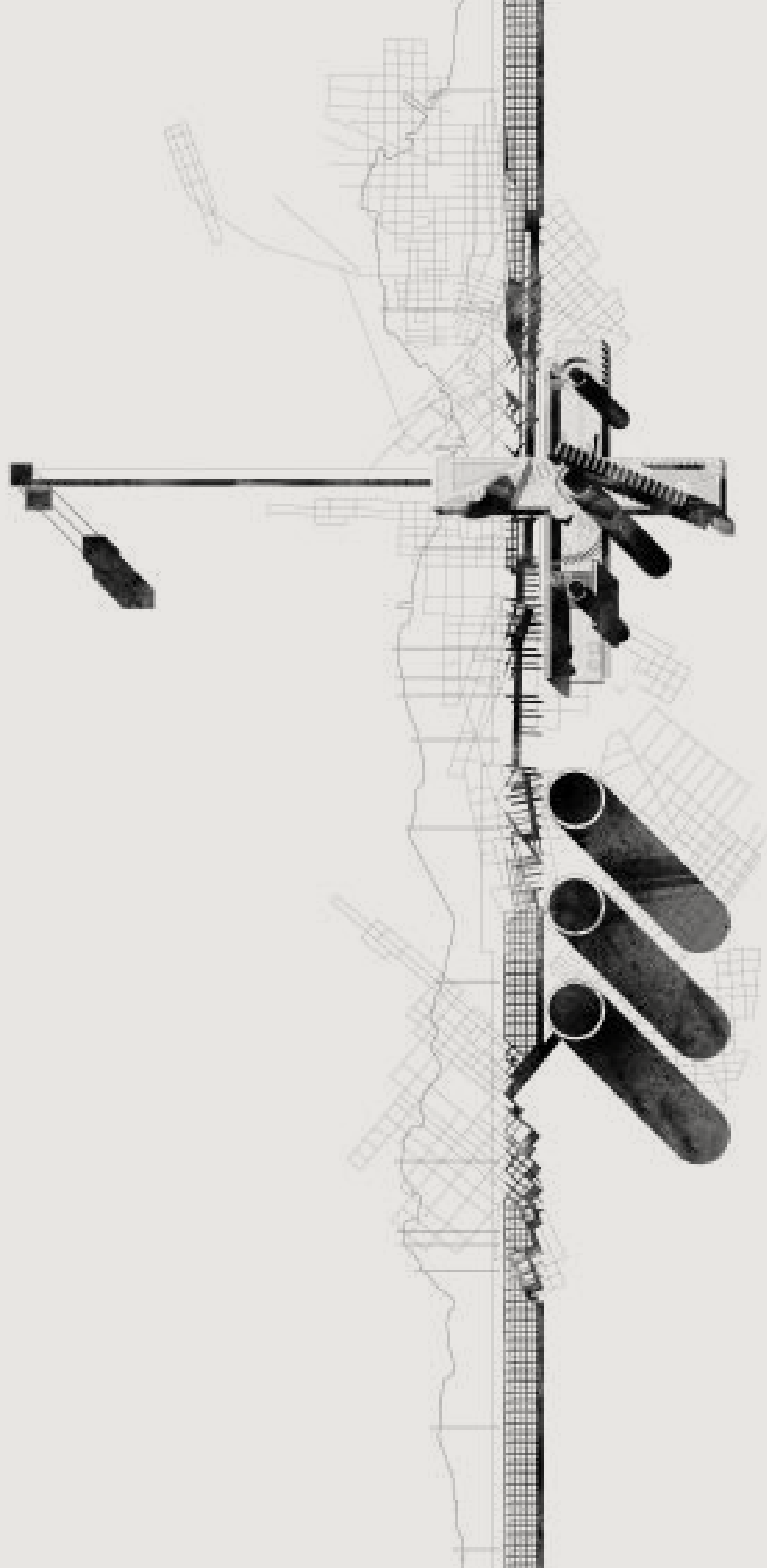


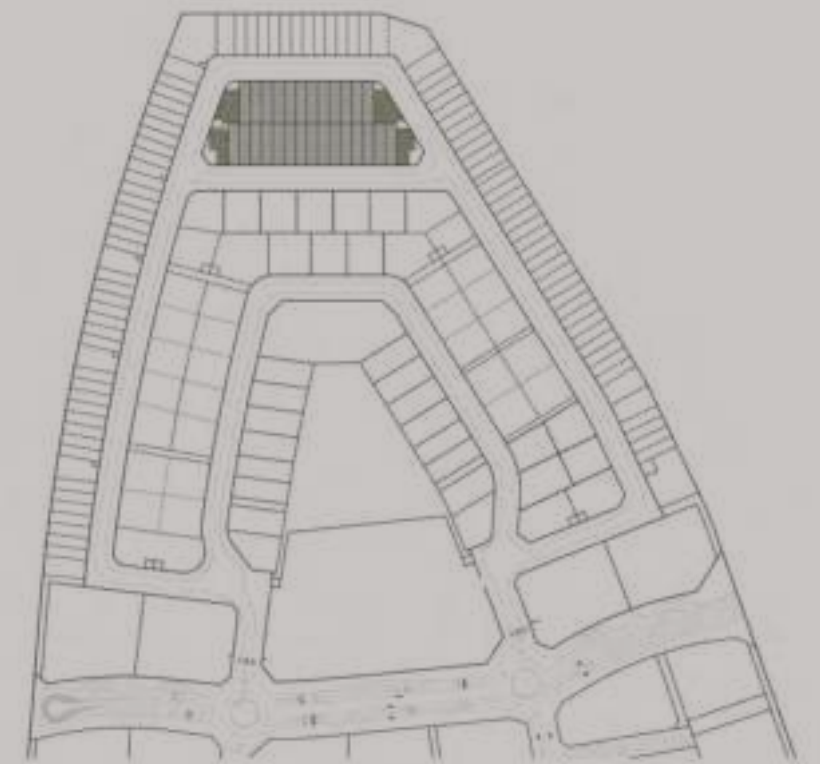
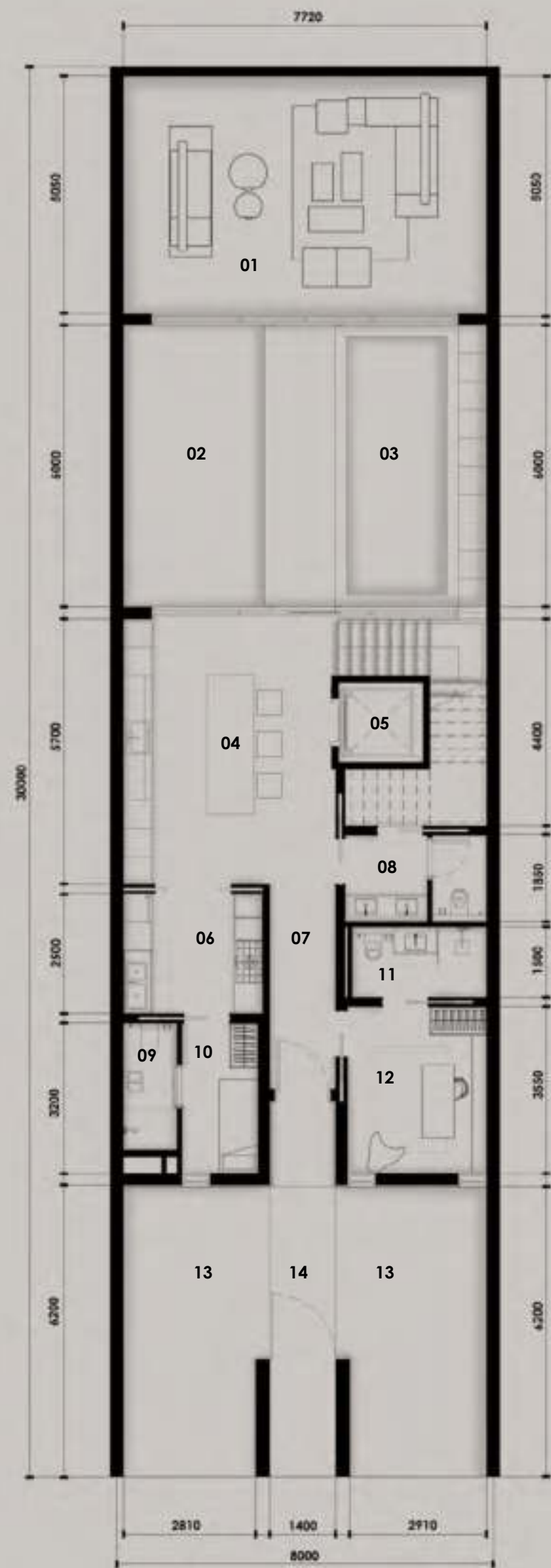
Mohammed Bin Rashid City District 7 (MBR7)
25.2048° N, 55.2708° E

KETURAH RESERVE

BIO LIVING
DESIGN PROCESS

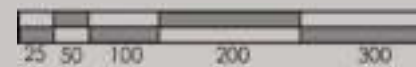






SUPERHOME	BUA (SQ.M)	BUA (SQ.FT)
Plant Room Level	28.80 sq.m	310.00 sq.ft
Ground Floor	185.80 sq.m	1,999.94 sq.ft
First Floor	97.30 sq.m	1,047.33 sq.ft
Second Floor	139.40 sq.m	1,500.48 sq.ft
Roof deck	95.30 sq.m	1,025.80 sq.ft
Total	546.60 sq.m	5,883.55 sq.ft

PLOT		
AREA	240.00 sq.m	2,583.34 sq.ft
Plot No.		46 and 47
No. of Units	27 REGULAR	4 CORNER
No. of Levels	GROUND + 2 FLOORS + ROOF	
Height	14.60M ROOF SLAB	



01 ENTERTAINMENT AREA
02 OUTDOOR YARD
03 POOL
04 KITCHEN | DINING AREA
05 LIFT
06 MAIN KITCHEN
07 HALLWAY

08 WASH AREA
09 MAID'S BATHROOM
10 MAID'S ROOM
11 GUEST BATHROOM
12 GUEST ROOM
13 CAR PORT
14 MAIN ENTRANCE

01 MASTER LIVING AREA
02 LIFT
03 WALK-IN-CLOSET
04 MASTER BEDROOM
05 MASTER BATHROOM
06 BALCONY

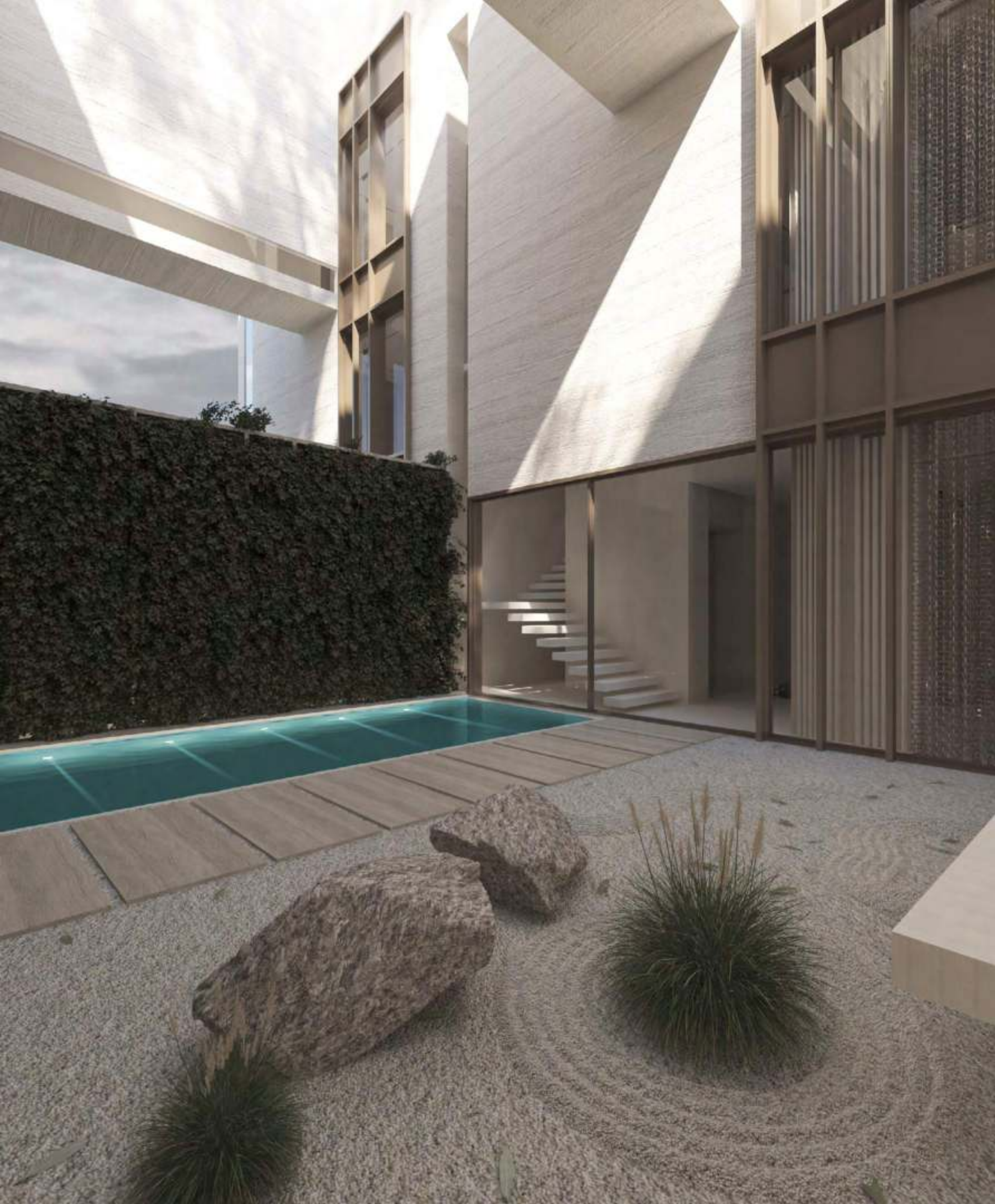
01 BATHROOM
02 BEDROOM
03 WALK-IN-CLOSET
04 BALCONY
05 ENTERTAINMENT AREA
06 LIFT
07 BATHROOM
08 BEDROOM | KID'S ROOM
09 WALK-IN-CLOSET
10 BALCONY
11 BALCONY

01 MEP SERVICES AREA
02 OUTDOOR GRILL AREA
03 LAUNDRY AREA
04 LIFT
05 OUTDOOR SEATING AREA

KETURAH RESERVE BACK-TO-BACK | 4 BEDROOM





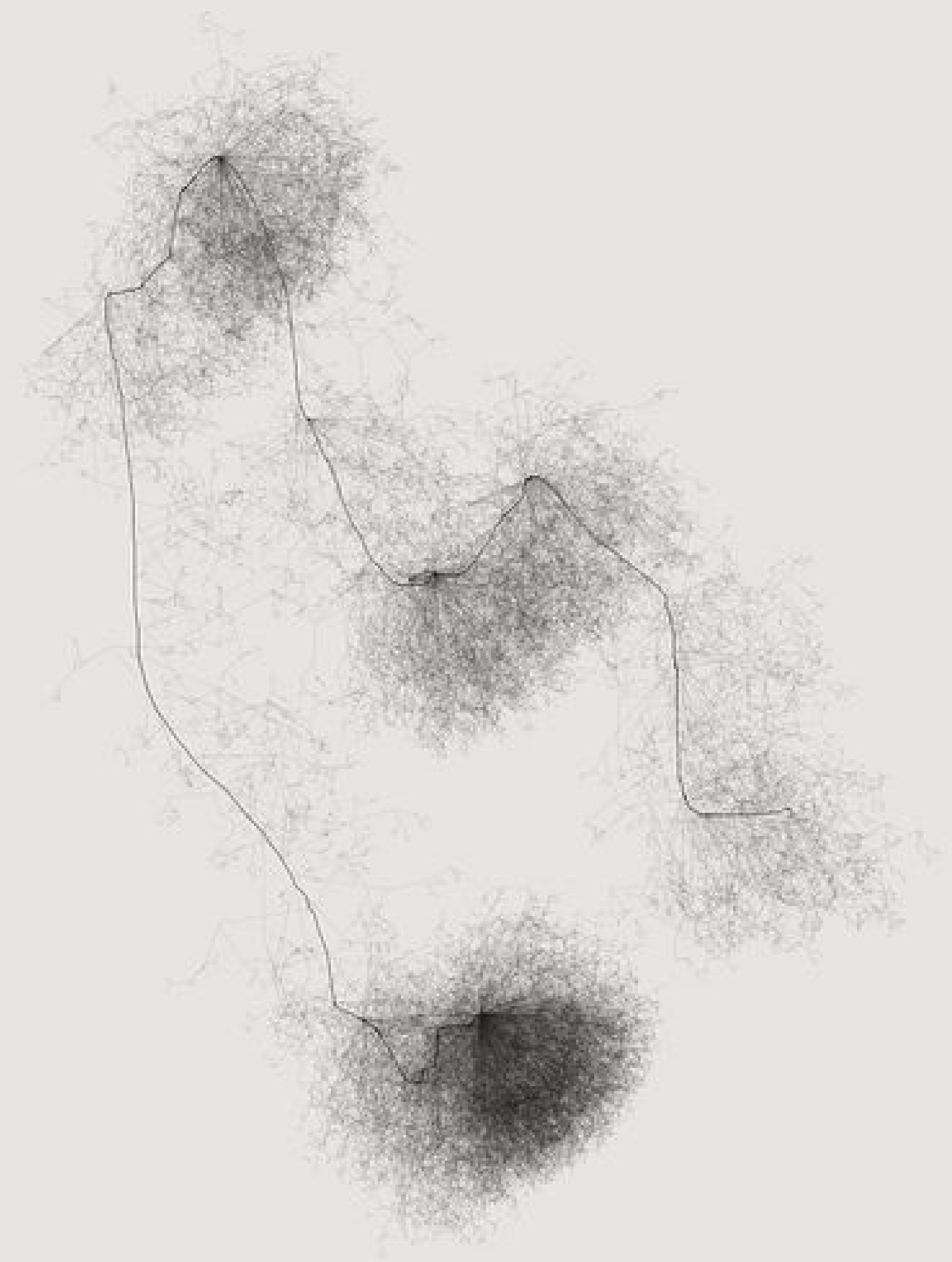


Mohammed Bin Rashid City District 7 (MBR7)
25.2048° N, 55.2708° E

KETURAH RESERVE

BIO LIVING
DESIGN PROCESS





Mohammed Bin Rashid City District 7 (MBR7)
25.2048° N, 55.2708° E



KETURAH RESERVE

BIO LIVING
DESIGN PROCESS



Mohammed Bin Rashid City District 7 (MBR7)
25.2048° N, 55.2708° E

KETURAH RESERVE

BIO LIVING
DESIGN PROCESS



Keturah Reserve is uniquely designed from the inside out,
from the central beating heart to the exterior,
the architectural skin.



Mohammed Bin Rashid City District 7 (MBR7)
25.2048° N, 55.2708° E



KETURAH RESERVE

BIO LIVING
DESIGN PROCESS





Mohammed Bin Rashid City District 7 (MBR7)
25.2048° N, 55.2708° E

ĶĒTURAH RESERVE
BIO LIVING
DESIGN PROCESS



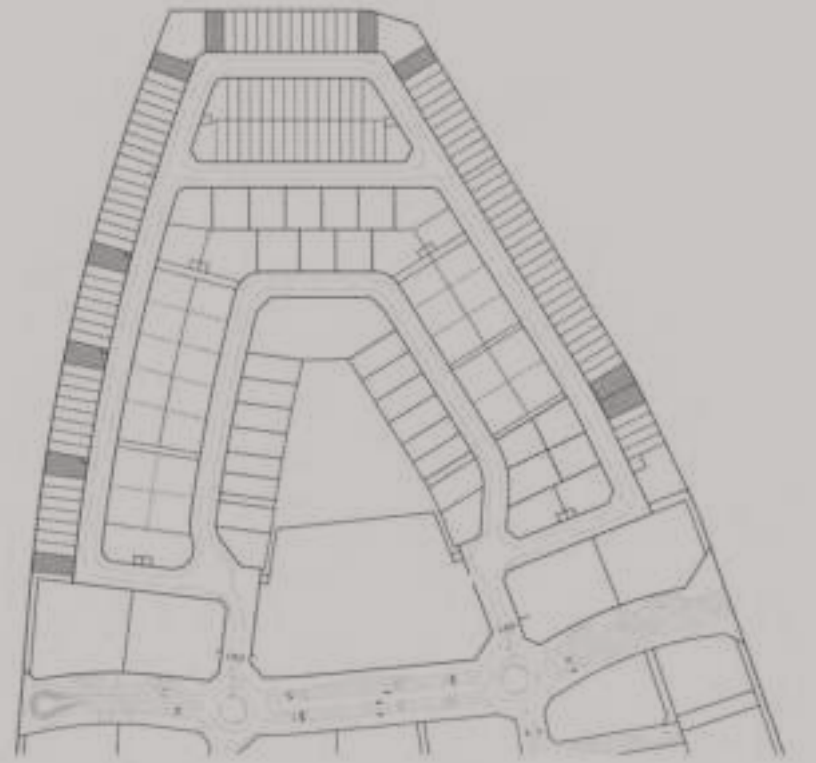
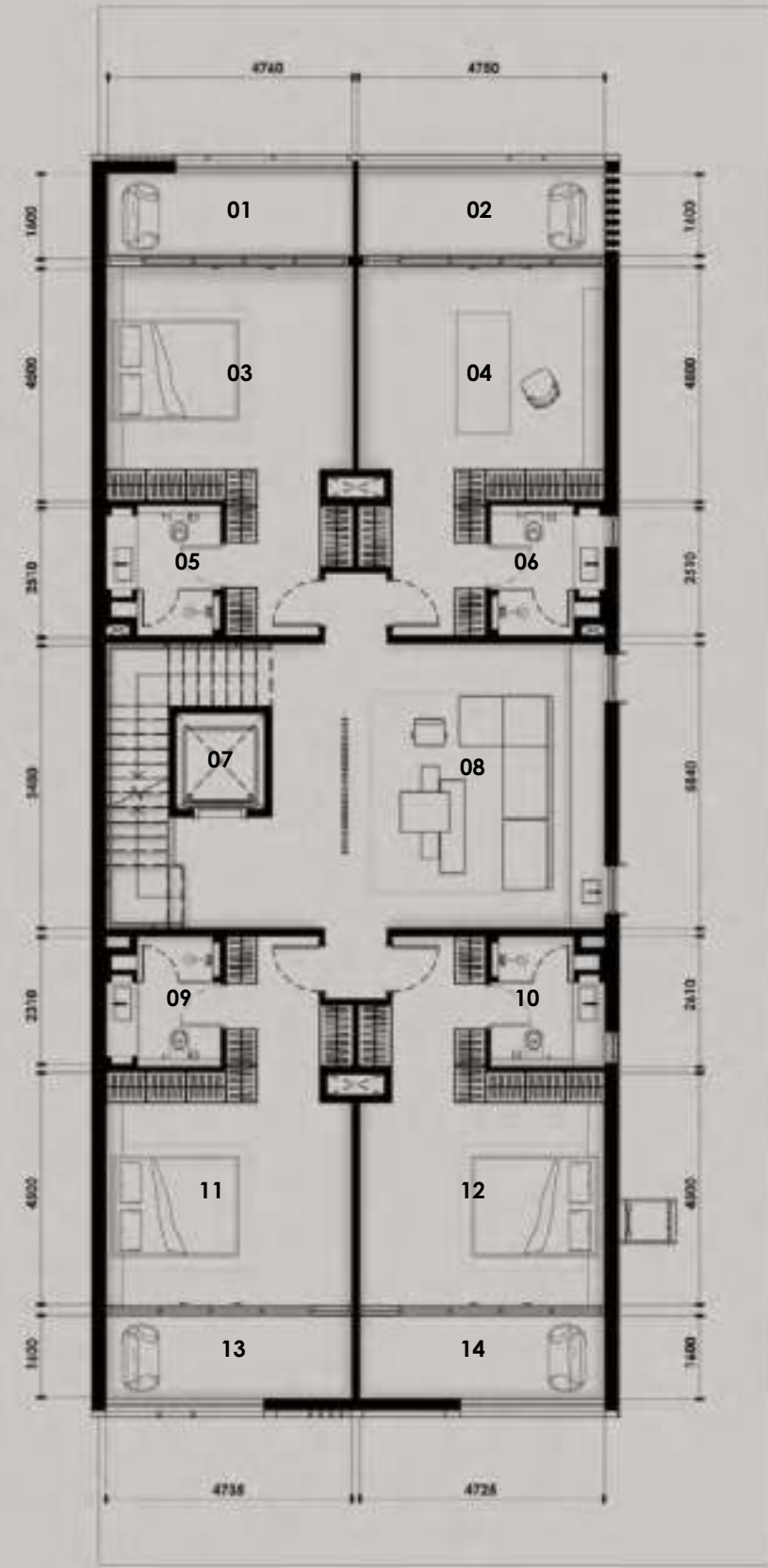
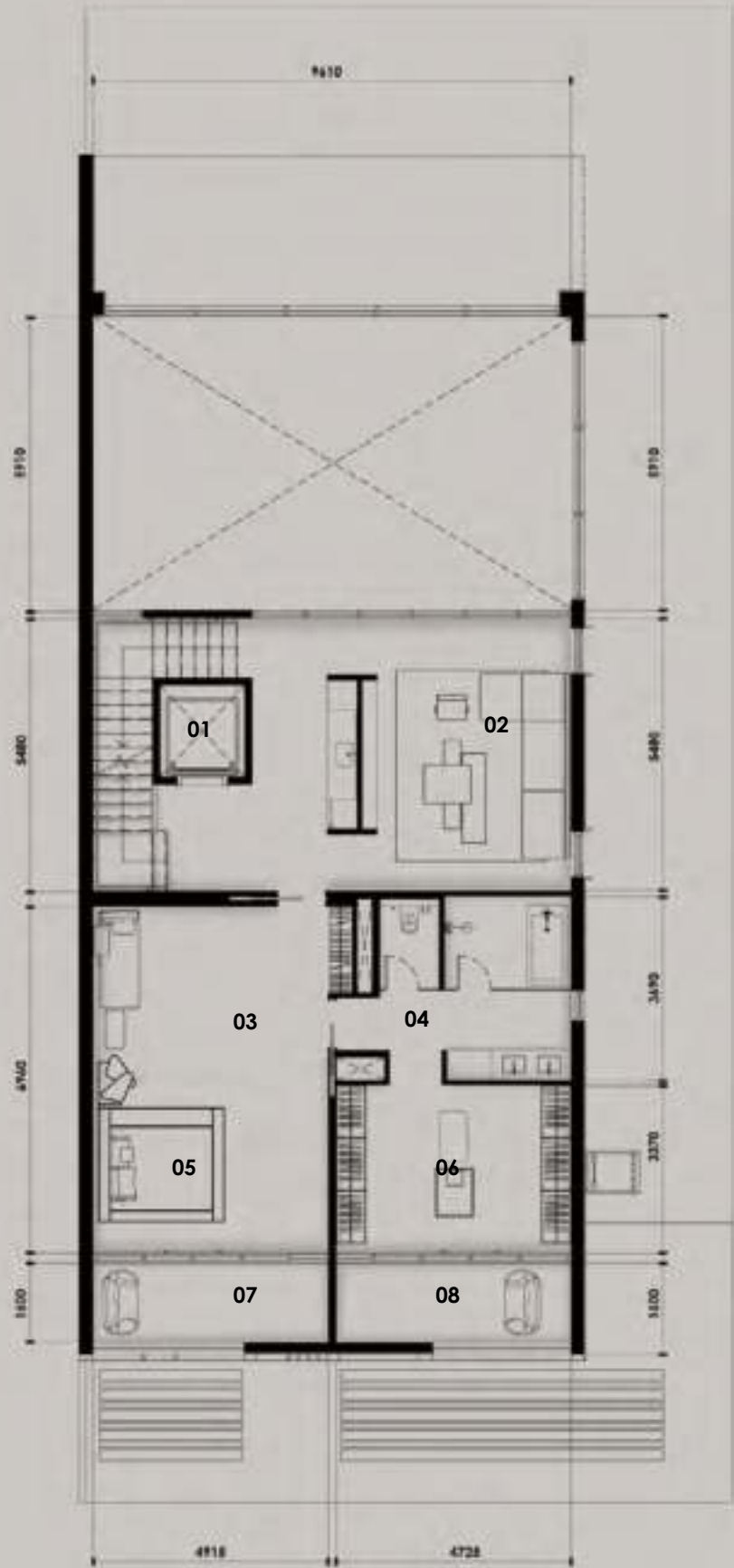
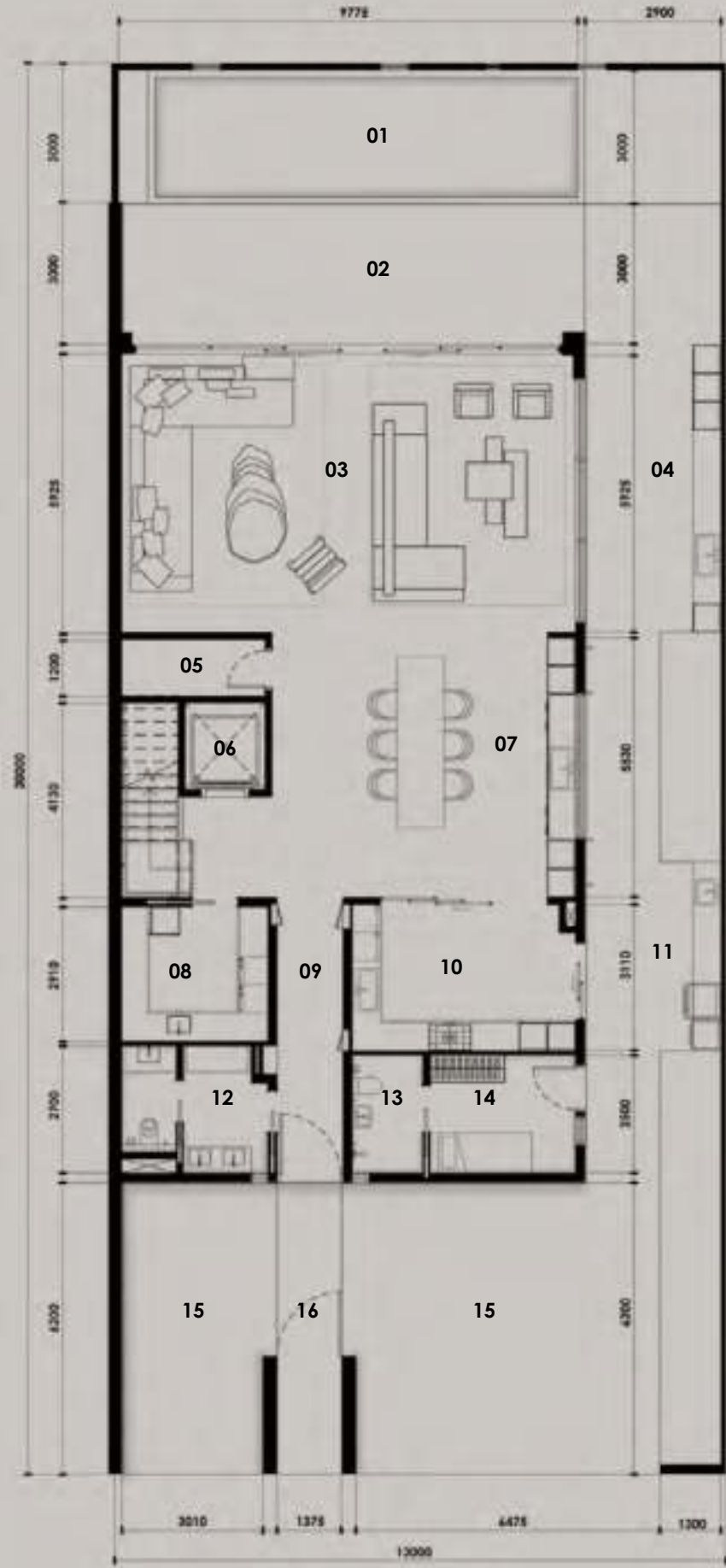
Mohammed Bin Rashid City District 7 (MBR7)
25.2048° N, 55.2708° E



KETURAH RESERVE

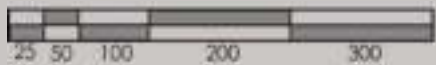
BIO LIVING
DESIGN PROCESS





SUPERHOME	BUA (SQ.M)	BUA (SQ.FT)
Plant Room Level	31.30 sq.m	336.91 sq.ft
Ground Floor	287.70 sq.m	3,096.77 sq.ft
First Floor	180.60 sq.m	1,943.96 sq.ft
Second Floor	236.50 sq.m	2,545.67 sq.ft
Roof deck	147.40 sq.m	1,586.60 sq.ft
Total	883.50 sq.m	9,509.91 sq.ft

PLOT		
AREA	390.00 sq.m	4,197.92 sq.ft
Plot No.		42, 43, 44 and 45
No. of Units		10 REGULAR
No. of Levels		GROUND + 2 FLOORS + ROOF
Height		14.60m ROOF SLAB



- 01 POOL

02 OUTDOOR TERRACE

03 ENTERTAINMENT AREA

04 OUTDOOR BAR

05 STORAGE

06 LIFT

07 KITCHEN | DINING AREA

08 LAUNDRY ROOM
- 09 HALLWAY

10 SERVICE KITCHEN

11 OUTDOOR GRILL AREA

12 WASH AREA

13 MAID'S BATHROOM

14 MAID'S ROOM

15 CARPORT

16 MAIN ENTRANCE

- 01 LIFT

02 MASTER LIVING AREA

03 MASTER SEATING AREA

04 MASTER BATHROOM

05 MASTER BEDROOM

06 WALK-IN-CLOSET

07 BALCONY

08 BALCONY

- 01 BALCONY 1

02 BALCONY 2

03 BEDROOM 1

04 BEDROOM 2

05 BATHROOM 1

06 BATHROOM 2

07 LIFT
- 08 ENTERTAINMENT AREA

09 BATHROOM 3

10 BATHROOM 4

11 BEDROOM 3

12 BEDROOM 4

13 BALCONY 3

14 BALCONY 4

- 01 OUTDOOR SEATING AREA

02 LIFT

03 OUTDOOR GRILL AREA

04 MEP SERVICES AREA

KETURAH RESERVE

ROW HOUSE | 5 BEDROOM



Mohammed Bin Rashid City District 7 (MBR7)
25.2048° N, 55.2708° E



KETURAH RESERVE

BIO LIVING
DESIGN PROCESS

Mohammed Bin Rashid City District 7 (MBR7)
25.2048° N, 55.2708° E



KETURAH RESERVE

BIO LIVING
DESIGN PROCESS



Mohammed Bin Rashid City District 7 (MBR7)
25.2048° N, 55.2708° E



KETURAH RESERVE

BIO LIVING
DESIGN PROCESS



Mohammed Bin Rashid City District 7 (MBR7)
25.2048° N, 55.2708° E



KETURAH RESERVE

BIO LIVING
DESIGN PROCESS



Mohammed Bin Rashid City District 7 (MBR7)
25.2048° N, 55.2708° E



KETURAH RESERVE

BIO LIVING
DESIGN PROCESS

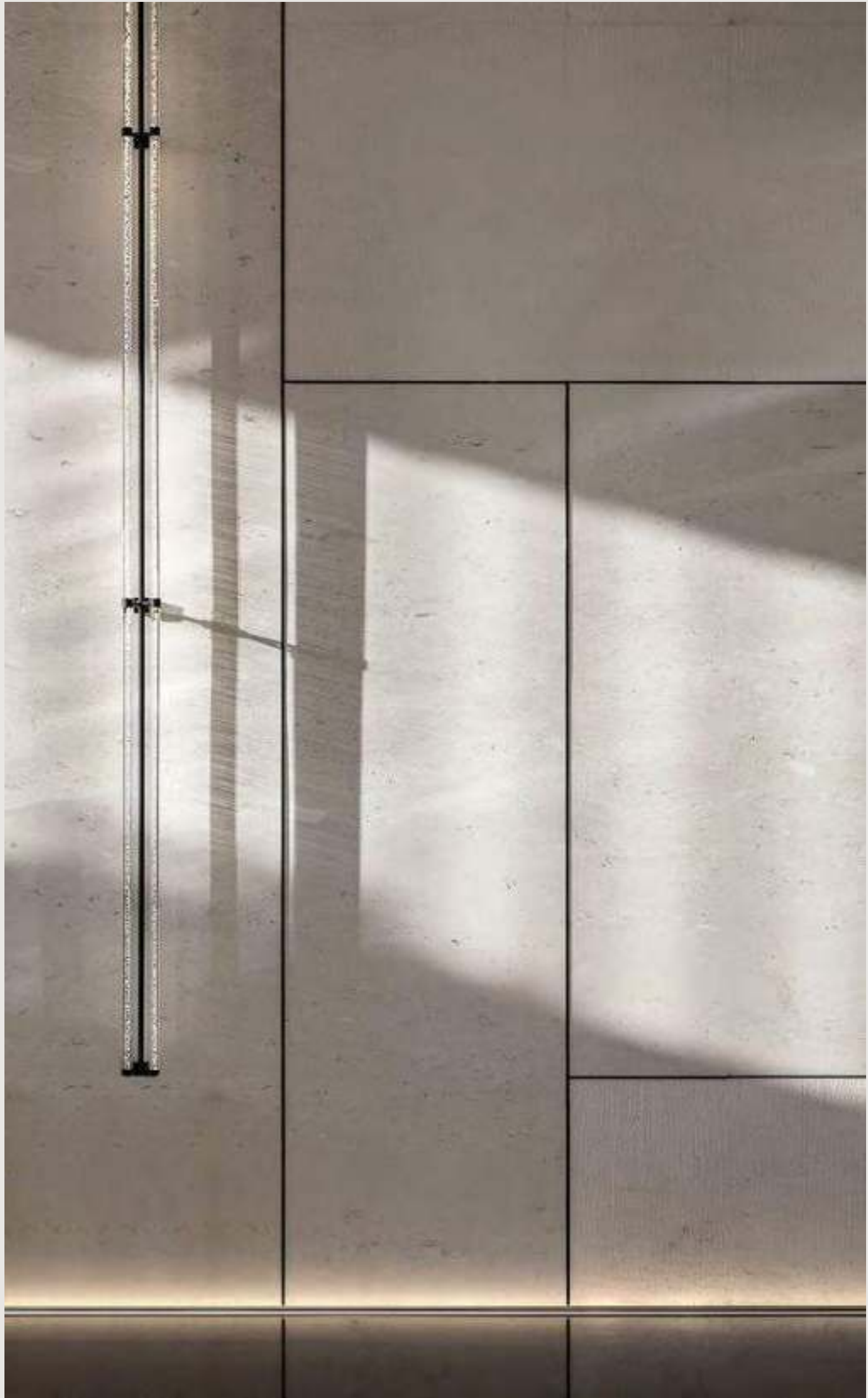


Mohammed Bin Rashid City District 7 (MBR7)
25.2048° N, 55.2708° E



KETURAH RESERVE

BIO LIVING
DESIGN PROCESS

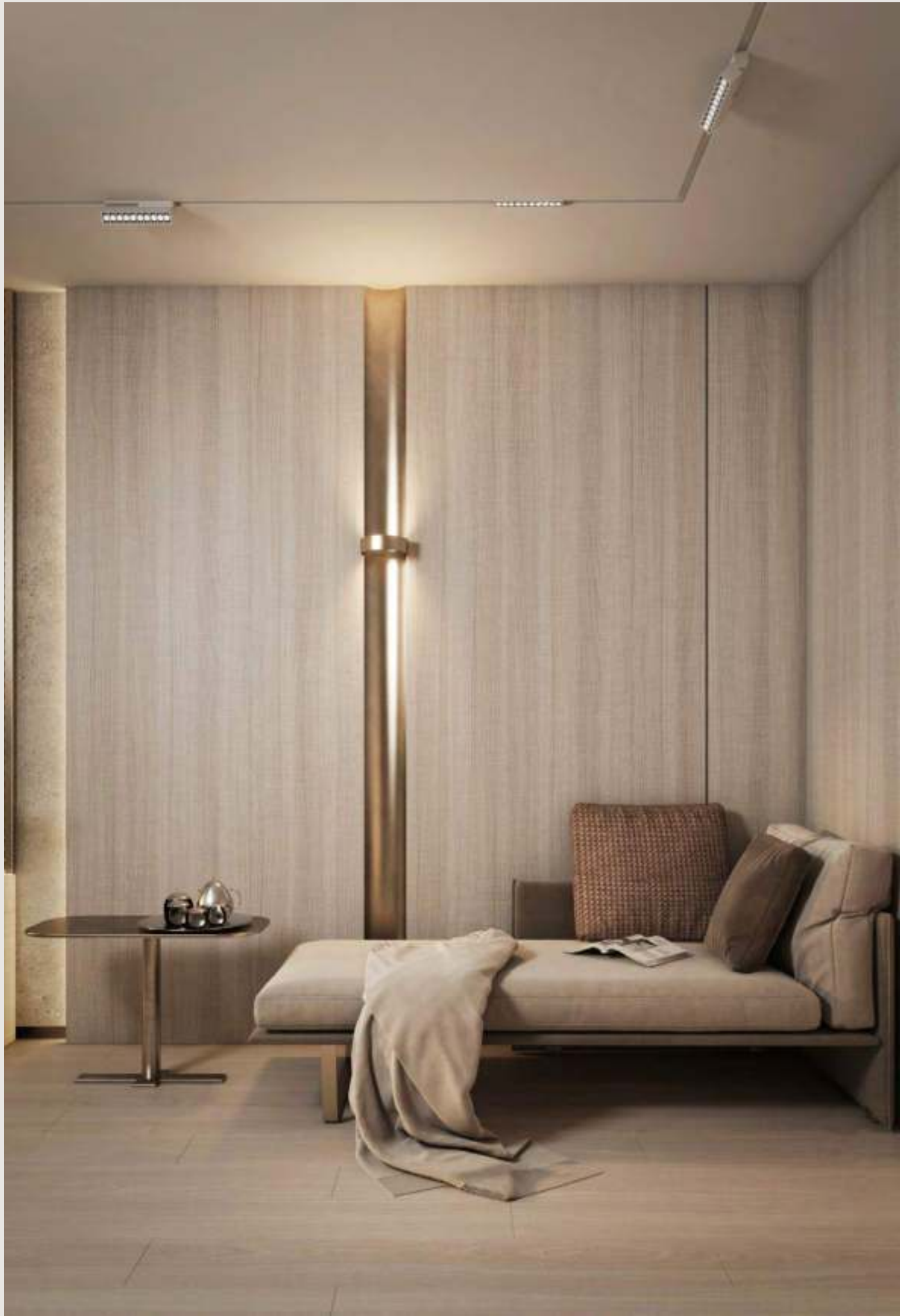


Mohammed Bin Rashid City District 7 (MBR7)
25.2048° N, 55.2708° E



KETURAH RESERVE

BIO LIVING
DESIGN PROCESS



Mohammed Bin Rashid City District 7 (MBR7)
25.2048° N, 55.2708° E



KETURAH RESERVE

BIO LIVING
DESIGN PROCESS



Mohammed Bin Rashid City District 7 (MBR7)
25.2048° N, 55.2708° E



KETURAH RESERVE

BIO LIVING
DESIGN PROCESS

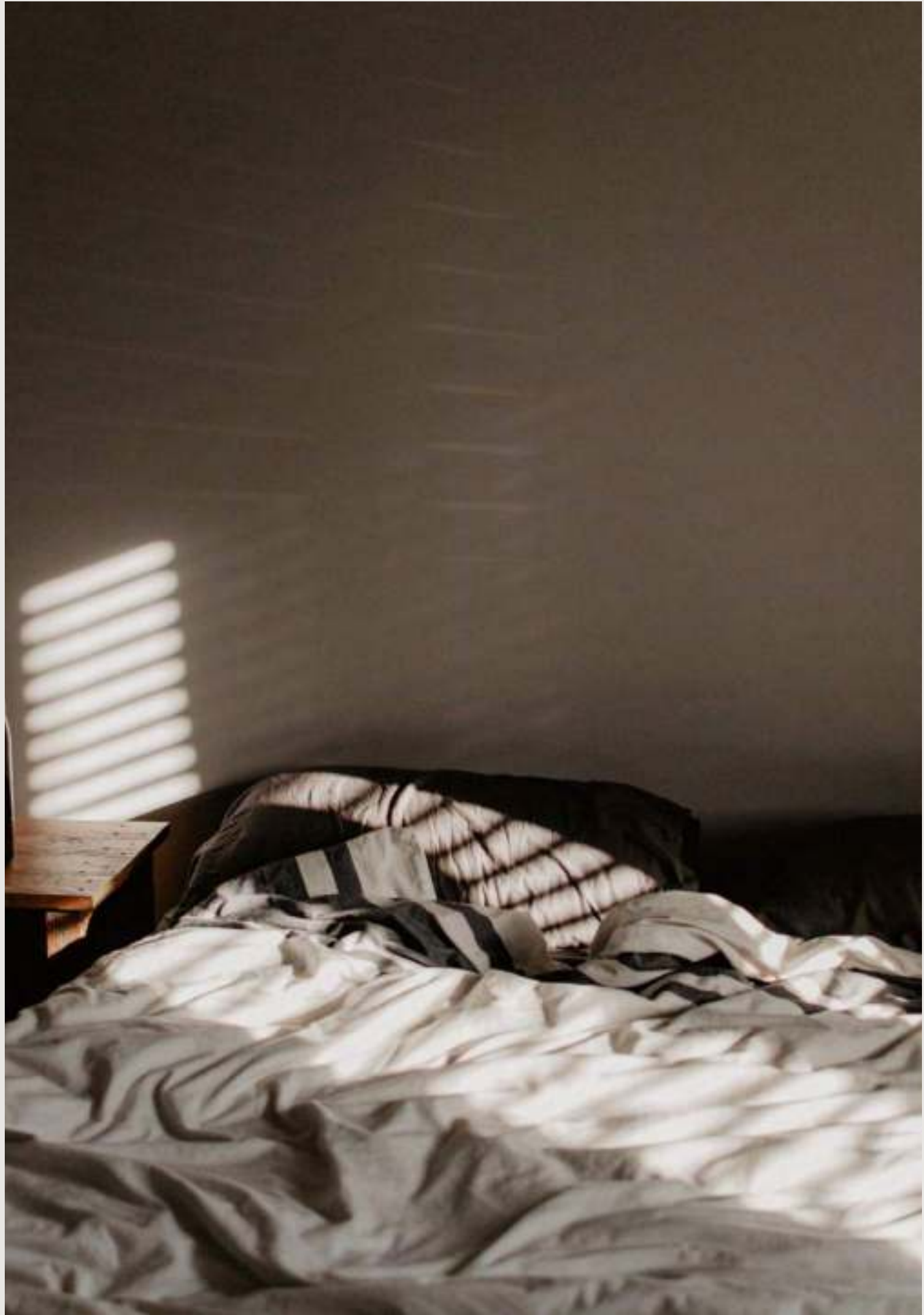


Mohammed Bin Rashid City District 7 (MBR7)
25.2048° N, 55.2708° E



KETURAH RESERVE

BIO LIVING
DESIGN PROCESS

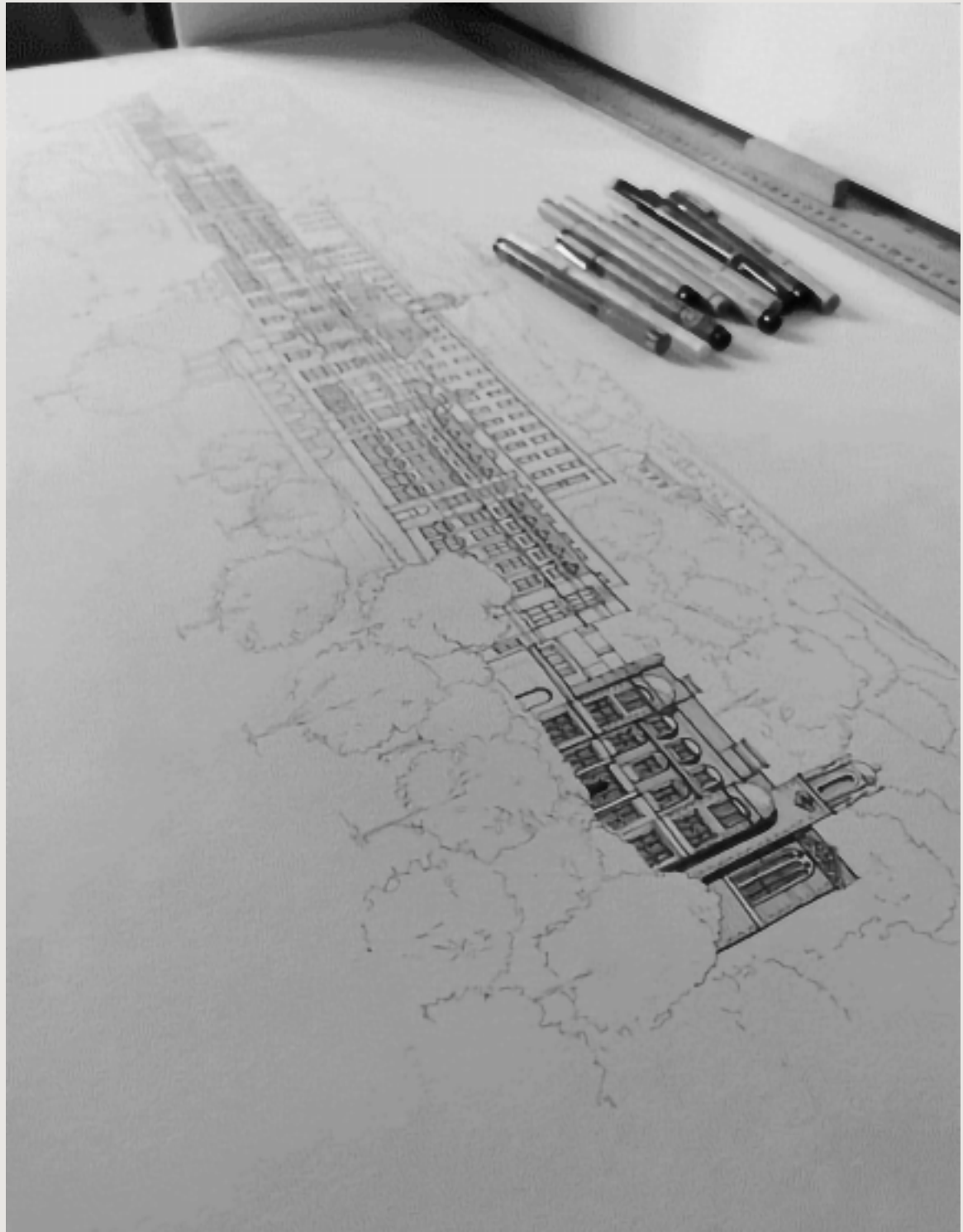


Mohammed Bin Rashid City District 7 (MBR7)
25.2048° N, 55.2708° E



KETURAH RESERVE

BIO LIVING
DESIGN PROCESS



Each Keturah Reserve home features a home office,
which may also be converted into a bedroom.

INTERIOR BODY

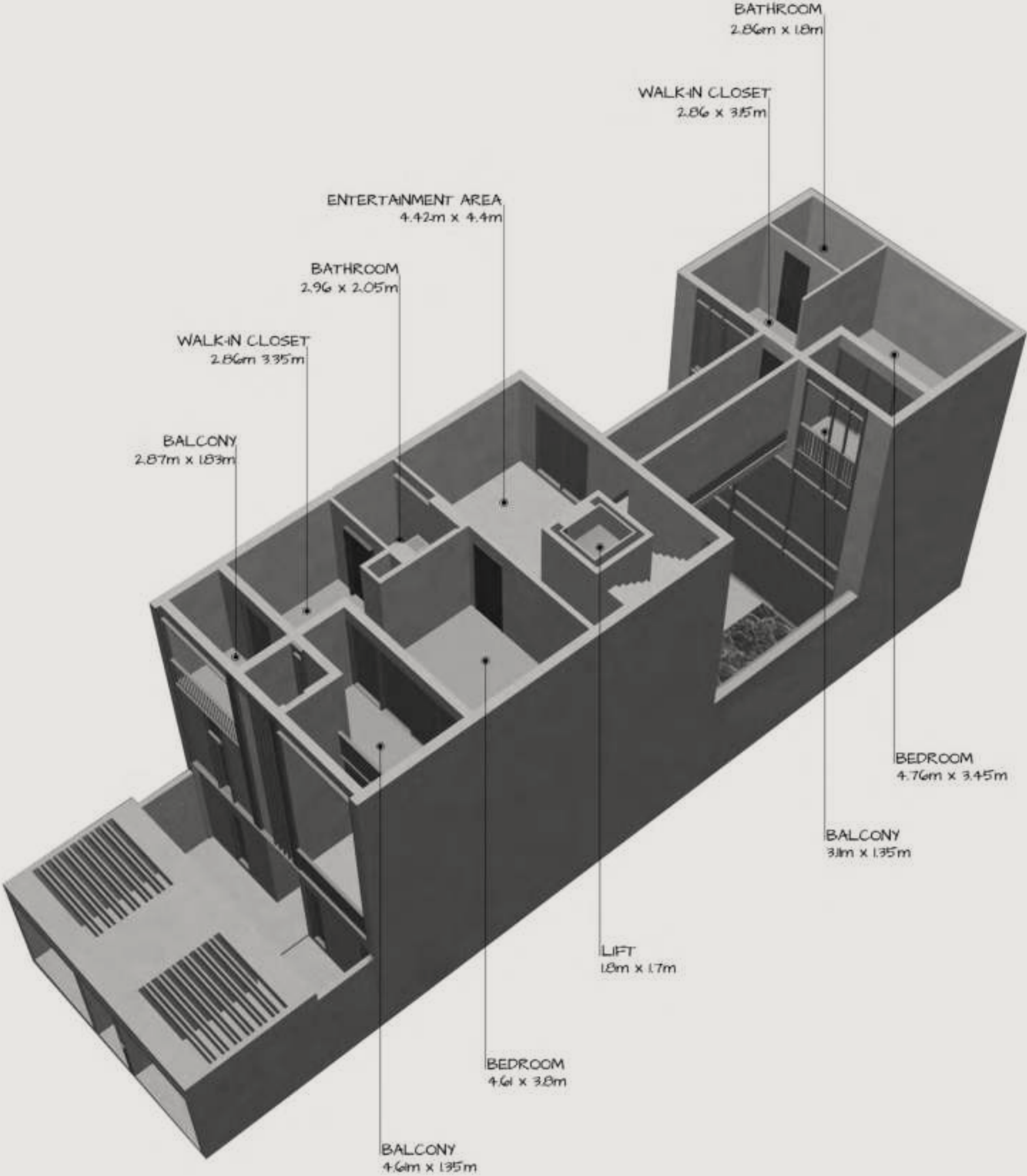
Keturah Reserve is uniquely designed from the inside out, from the central beating heart to the exterior, the architectural skin.

ARCHITECTURE SKIN

The clean, geometric lines of the façade connect the interior to the exterior.

LANDSCAPE

The homes blend into the rawness of the desert landscape with its indigenous plants and olive trees.





FRAMELESS SLIDING DOOR



WHITE TRAVERTINE TILES

The travertine façade links the outside to the inside, with the vertical metal slats creating a play of shadow and intimacy.



HAIRLINE CHAMPAGNE METAL



WOODEN FLOOR

Quooker®

Hot, cold, chilled and sparking filtered water from a single tap.



TOTO

Award-winning innovative sanitary ceramic bathroom suites from Japan.



Miele

German engineered state-of-the-art kitchen appliances. Revolutionary Technology.



dyson

Cordless vacuum cleaner for optimum home hygiene.



Mohammed Bin Rashid City District 7 (MBR7)
25.2048° N, 55.2708° E

KETURAH RESERVE

BIO LIVING
DESIGN PROCESS

HOME OWNING ADVANTAGES AT KETURAH RESERVE

Becoming a Keturah Reserve homeowner entitles the resident to request and obtain Visas for family members and house employees including chefs, nannies, maids, gardeners and personal secretaries, (subject to approval).



INCLUSIVE SERVICES

FOR YOUR HOME

- Paint retouching
- Art installation
- Care and maintenance for plants
- Garbage disposal and recycling
- Filter change
- Engineering and plumbing assistance
- Pool cleaning
- Newspaper and magazine delivery
- Vacant home care
- Special events space reservation
- Communal area housekeeping
- Communal area maintenance
- Organic dry cleaning and alterations

FOR YOUR FAMILY

- Moving-in assistance and coordination
- Nanny, au pair and babysitting services
- Airline or private air reservations
- Airport and ground transportation arrangements
- Ordering floral arrangements
- Activity arrangements for children and adults
- Delivery services coordination
- Limousine and car service reservations
- Valet parking
- Car Wash
- Hotel and guest suite reservations
- Golf tee times reservations
- Spa and salon appointments
- Personal trainer
- Restaurant reservations
- Hotel and guest suite reservations

FOR PETS

- Pet spa and grooming
- Dog walking

Mohammed Bin Rashid City District 7 (MBR7)
25.2048° N, 55.2708° E

KETURAH RESERVE

BIO LIVING
DESIGN PROCESS

PAYMENT IN CRYPTO CURRENCY

Keturah Reserve offers buyers the option of buying their property in crypto currency.

Accepted currencies:

- USDT
- Bitcoin-BTC
- Ethereum-ETH
- USDC
- Ripple-XRP
- Litecoin-LTC
- Bitcoin Cash -BCH
- Chainlink-Link
- Uniswap-UNI
- Compound-COMP
- FTX Token-FTT
- Chiliz-CHZ
- Fantom Token-FTM
- AAVE
- Avalanche-AVAX
- Maker-MKR
- Yearn Finance-YFI
- Polygon-MATIC
- Sandbox-SAND
- Stellar Lumens-XLM
- EOSIO-EOS

The Keturah Reserve Payment Plan

- 15% down payment on reservation
- 5% after 30 days
- 10% after 150 days
- 10% after 370 days
- 10% after 540 days
- 10% after 700 days
- 40% on Handover

KETURAH

RESERVE

For a viewing appointment, please call
800 624

KETURAH RESERVE
TRANSFORMATIONAL LIVING THROUGH DESIGN