



THE RESIDENCES

PENINSULA DUBAI

A DEVELOPMENT BY H&H

CONTENTS

03
Vision

09
Location

12
Architecture

17
Interiors

26
Lifestyle

29
Retail

32
Amenities

35
Team

AN INTRODUCTION TO A NEW WAY OF LIVING



VISION

WELCOME TO A PLACE WHERE SKY, LAND AND SEA COME TOGETHER IN PERFECT HARMONY

Here at the meeting point of Dubai Canal and the Arabian Gulf, this dynamic new community of residences, boutique retail and hotels has been designed to exacting standards of luxury.

Arcing gracefully around a beautiful new marina, in the mesmerizing glow of sunrises and sunsets, this is one of the city's most exciting and well-connected destinations.





VISION

RESIDENCES INSPIRED BY THE TIMELESS ELEGANCE OF THE WORLD'S MOST SOPHISTICATED COASTAL COMMUNITIES

The Peninsula Dubai Residences is a collection of contemporary homes that creates an exciting new blueprint for waterfront living in Dubai. Designed by masters of their craft, with a focus on light, space and exquisite detailing, The Peninsula Dubai Residences offer incredible 360-degree views from gracious curved terraces.





VISION

REFINED WATERFRONT LIVING FROM MASTER ARCHITECTS FOUNDED BY THE CELEBRATED RICHARD ROGERS

The Peninsula Dubai Residences is more than great architecture, it's the catalyst for a whole new waterfront community for the city.

Designed by the world-renowned architectural firm RSHP, this is a place of quiet luxury, with beautiful homes, sensitive landscaping and a curated selection of leisure and retail experiences.



A BEAUTIFULLY CONNECTED LOCATION



LOCATION

AN EXTRAORDINARY SETTING
IN JUMEIRAH, WHERE THE DUBAI
CANAL FLOWS GENTLY OUT TO
THE ARABIAN GULF

With its quiet coastal location, The Peninsula Dubai Residences has the feel of an exclusive waterfront resort. Yet, this peaceful community offers easy connections to Dubai's major destinations: Downtown, the Design District, Kite Beach and more are all within a 10km radius.



LOCATION MAP

- 1

Aman Residences Dubai
- 2

Bvlgari Resort Dubai
- 3

Four Seasons Resort Dubai at Jumeirah Beach
- 4

Tolerance Bridge
- 5

Burj Khalifa
- 6

Dubai Mall
- 7

DIFC Gate Avenue
- 8

Emirates Towers
- 9

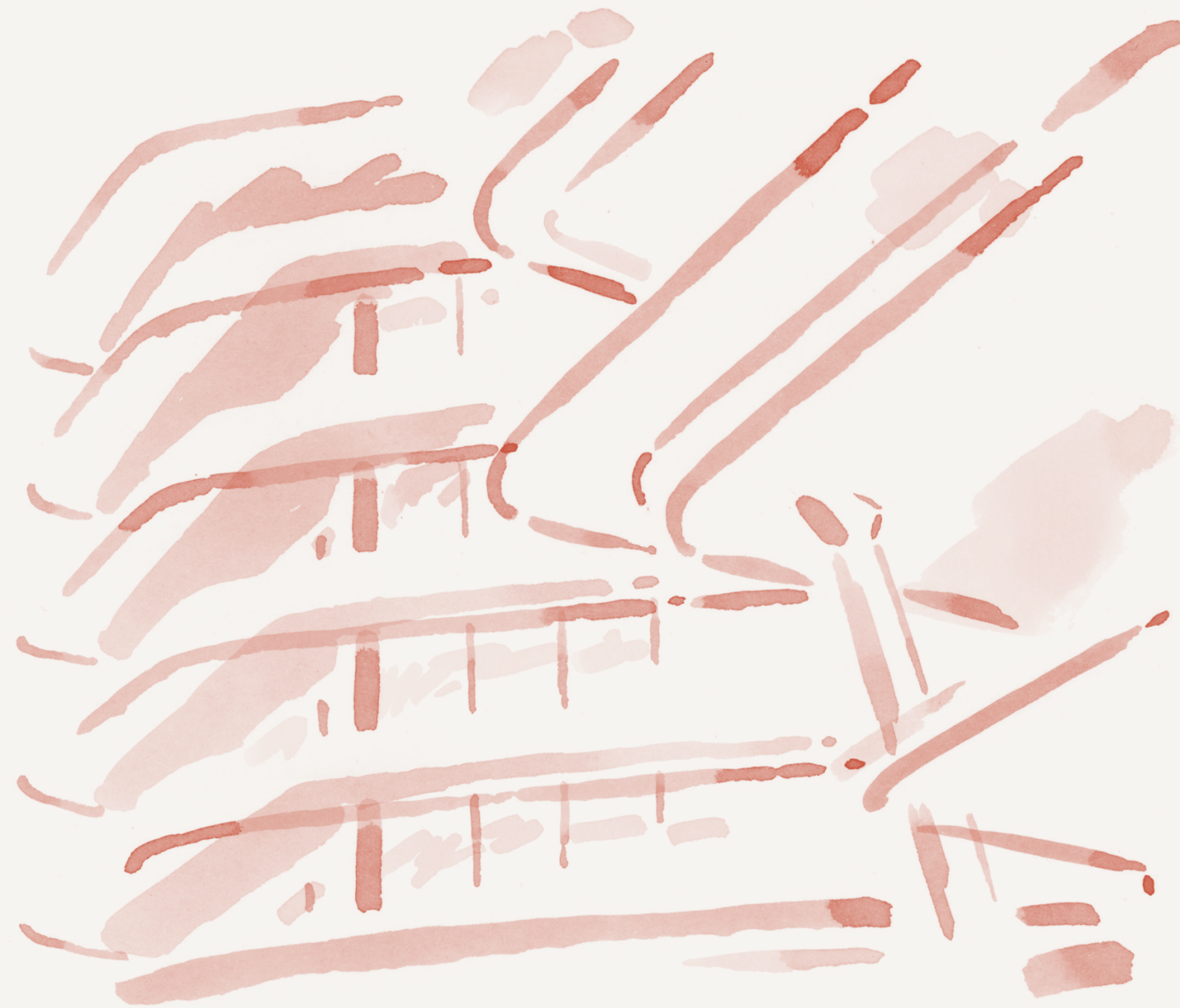
Museum of the Future
- 10

Dubai International Airport

THE RESIDENCES
PENINSULA
DUBAI



ARCHITECTURE OF INFINITE HORIZONS



ARCHITECTURE

A SOPHISTICATED NEW ARCHITECTURE SHAPED BY INFINITE HORIZONS AND THE RHYTHMIC MOVEMENT OF WATER


The Peninsula Dubai Residences sweep around the marina as a series of contemporary buildings at the edge of the Arabian Gulf. At either end of the peninsula, elegant towers rise above the boulevard as interconnected forms, linked by terraces and bridges.

These are some of the city's finest residences, their generous scale, sweeping terraces and unparalleled views offering a compelling new take on waterfront living.





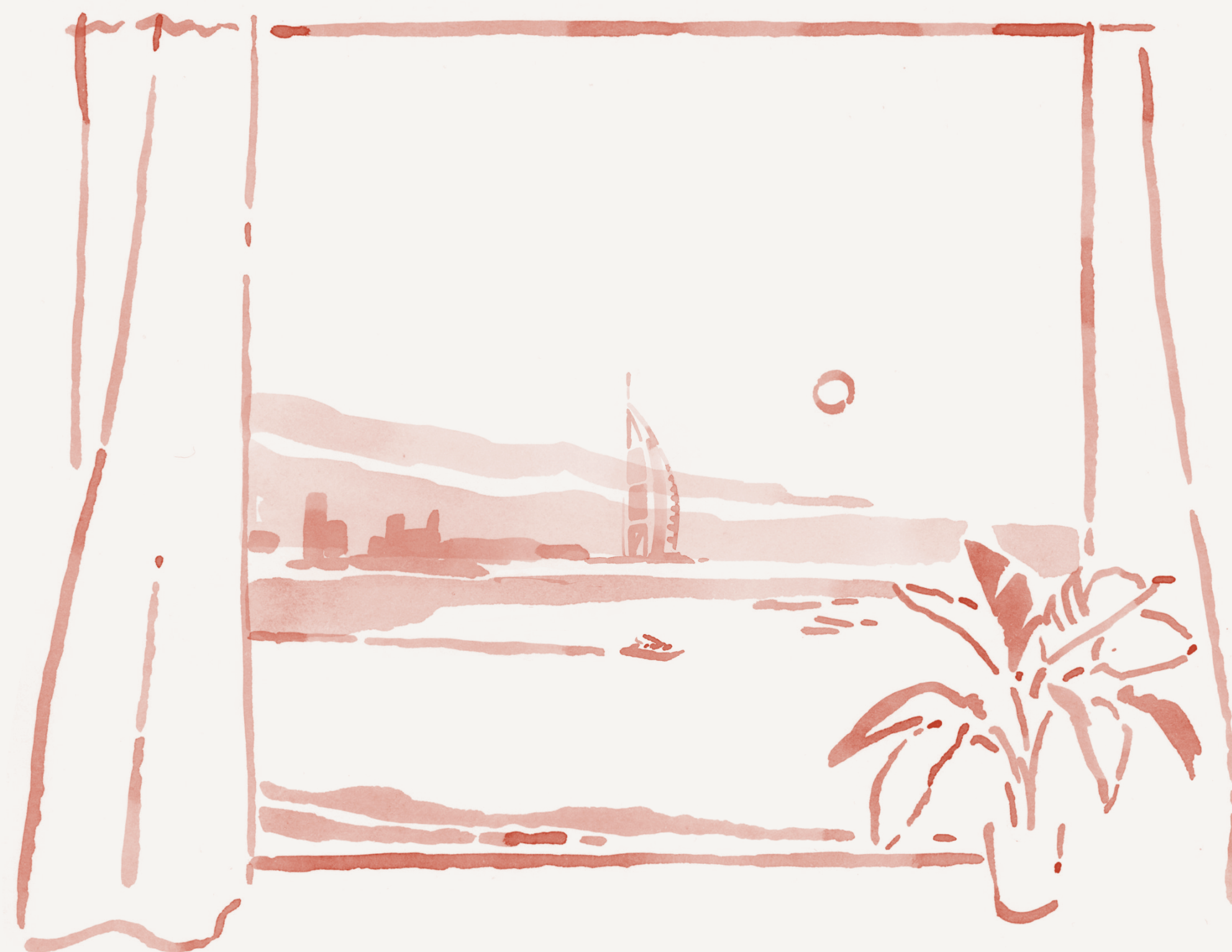


A photograph of a modern, multi-story building with curved balconies and glass railings. The building is illuminated at dusk, with warm interior lights and exterior lighting highlighting its architectural details. The balconies are stacked vertically, creating a sense of depth and movement. The glass railings reflect the surrounding environment, adding to the building's sleek and contemporary appearance.

“We wanted to create an exciting, yet elegant new waterfront district for Dubai, one that integrated contemporary architecture with an unrivaled collection of amenities, including world-class retail and hospitality. All inspired by the natural beauty of its coastal location.”

ROGERS STIRK HARBOUR + PARTNERS

RESIDENCES OF RARE BEAUTY



INTERIORS

IMMERSED IN BEAUTY,
SURROUNDED BY ELEGANCE,
WITH NATURAL MATERIALS,
SOFT FABRICS AND COASTAL HUES

A dramatic entrance lobby, robed in Calacatta marble and timber panels, sets a sumptuous tone for each residence. The spacious, light-filled living room celebrates the dazzling waterfront views that move from morning sky blues to deep sunset reds.







Kitchens feature richly-veined marble and smooth travertine, along with sleek brass accents and sophisticated technology.





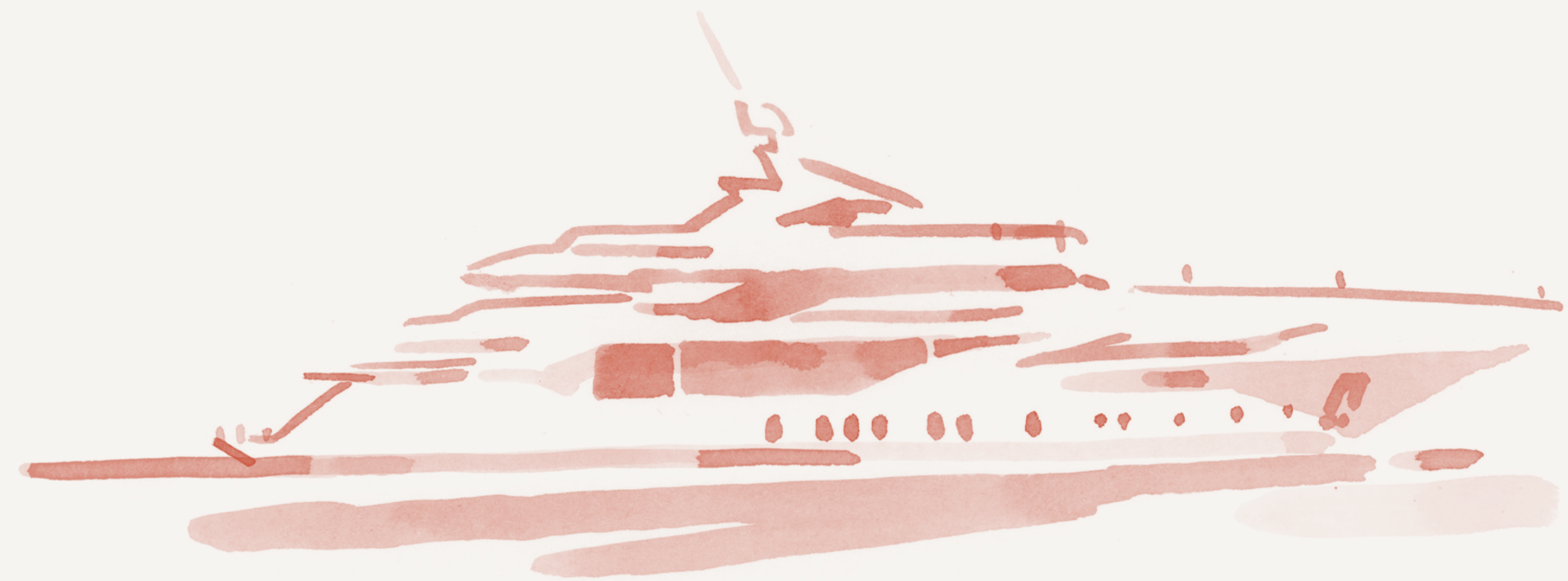


From tranquil morning rituals to the quiet calm of night, the bedrooms have a serene organic feel, with light woods and opulent textured fabrics.





A LIFESTYLE OF BOUNDLESS PROMISE



LIFESTYLE

A TIMELESS ELEGANCE AND A FRESH SENSE OF POSSIBILITIES BY THE SEA

The Peninsula Dubai Residences is a dynamic new destination for Jumeirah. Here, life revolves around the water, with landscaped boulevards for gentle strolls and a marina that welcomes yachts home from their journeys around the Arabian Gulf.

High end fashion boutiques, art galleries and some of the city's finest restaurants further enhance a resort characterized by an understated elegance rarely experienced in Dubai.





AN UNPARALLED RETAIL EXPERIENCE



RETAIL

DISCOVER NEW COLLECTIONS IN A BREATHTAKING COASTAL SETTING

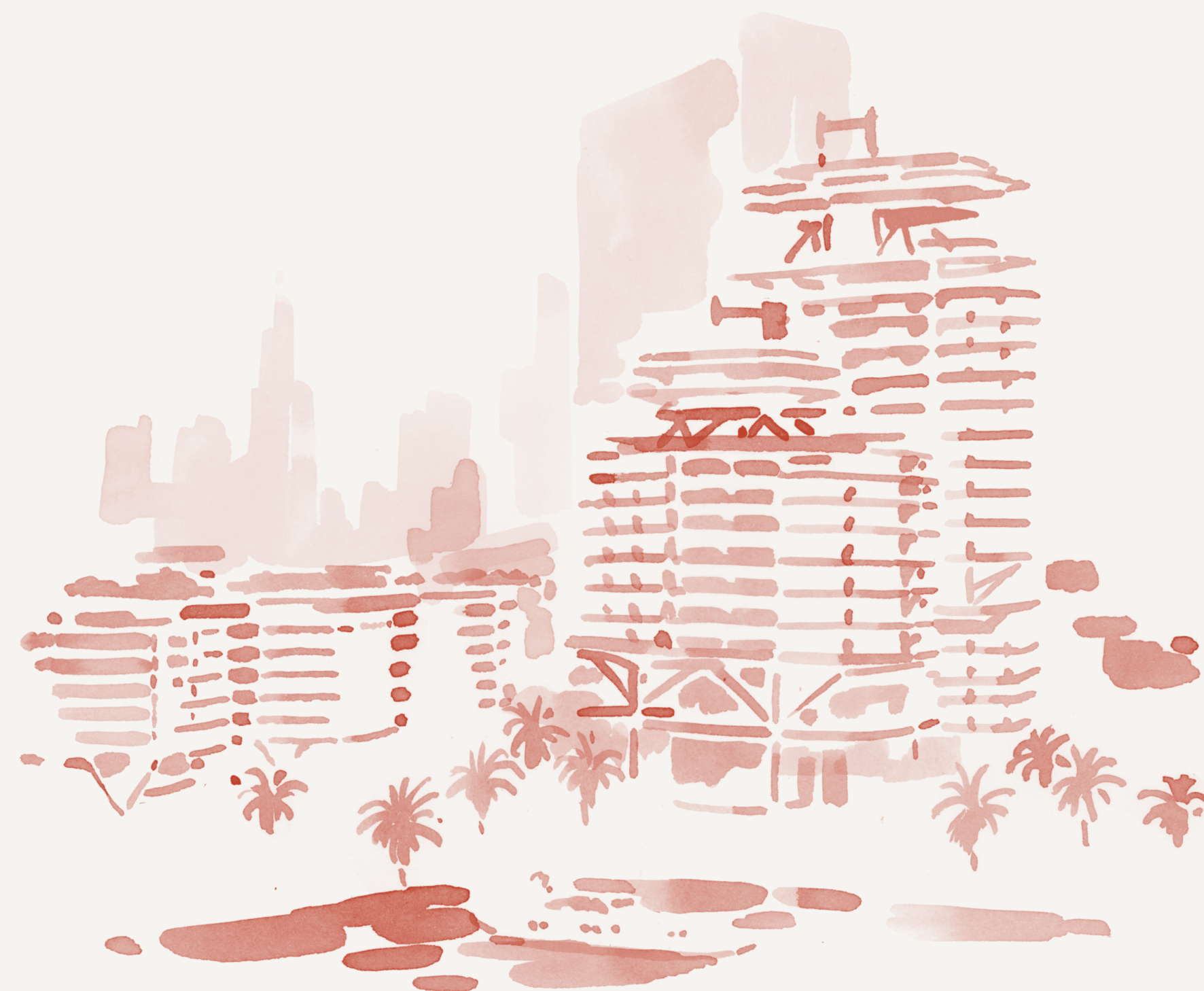
Every season brings a new collection ready to be discovered in this beautiful boulevard of high fashion. Curving around the marina, the stores open onto a series of elegant landscaped spaces where retail and event pavilions add to the community's sense of energy.

From morning coffee to evening dinner, the marina's hotels, cafes and restaurants are places to gather with friends and family and enjoy the sophisticated surroundings.





AN ARRAY OF AMENITIES



AMENITIES

FROM TRANQUIL MOMENTS TO
ENERGIZING WORKOUTS, THERE'S
AN ACTIVITY FOR EVERY MOOD

The Peninsula Dubai Residences' high-end amenity program includes two pools, with views over city or the sea, wellness facilities, a state-of-the-art gym and an inspirational kids' club. It's a beautiful selection of amenities, designed to complement its prestigious location.





A WORLD-CLASS TEAM
WORKING IN COLLABORATION

TEAM

ROGERS STIRK HARBOUR + PARTNERS

RSHP is an award-winning architectural practice operating globally. Its architecture responds to social, environmental and economic challenges alike, shaping the way people engage with place and, in turn, the planet.

RSHP's design approach is rooted in thoughtfulness, problem-solving and ingenuity, always with adaptability in mind. Social responsibility is at the heart of RSHP, with almost £20 million distributed through the practice's charity to date.



RICHARD PAUL

PARTNER RSHP

1508 LONDON

Bespoke. Refined. Global. 1508 is an international interior design and architecture firm, renowned for creating exceptional spaces worldwide with studios in London, Dubai, Singapore, Bangkok, Sao Paulo, Miami and Los Angeles.

Founded in 2010, the design firm has come to define the world’s most innovative and exquisite living spaces, providing furnishings for the finest homes, hotels, luxury developments, and super yachts across the UK, Europe, the Middle East, Asia, and the USA. The firm’s design philosophy favors an approach derived from measured principles, inspired by history, geography, and the architectural vernacular.



ANTHONY TAYLOR
DESIGN PRINCIPAL 1508



H&H Sales Gallery at Eden House Al Satwa

Tel: +971 4 344 7483

Email: info@peninsuladubairesidences.ae

Website: peninsuladubairesidences.ae

A DEVELOPMENT BY H&H

Disclaimer: The artist representations and interior decorations, finishes, appliances, and furnishings are provided for illustrative purposes only. H&H Development LLO makes no representations or warranties except as set forth in the Offering Plan. H&H Development LLC reserves the right to substitute materials, appliances, equipment, fixtures and other construction and design details specified herein with similar materials, appliances, equipment and/ or fixtures of substantially equal or better quality. H&H Development LLO reserves the right to make changes in accordance with the terms of the Offering Plan. The use of any designations, labels or nomenclature is for marketing purposes only. (10/2024)